

UTRO Rabbit pAb

CatalogNo: YN1506

Key Features

Host Species

- Rabbit

Reactivity

- Human,Rat

Applications

- IHC,IF

MW

- 377kD (Observed)

Isotype

- IgG

Recommended Dilution Ratios

IHC 1:50-300

IF 1:50-200

Storage

Storage*

-15°C to -25°C/1 year(Do not lower than -25°C)

Formulation

Liquid in PBS containing 50% glycerol, 0.5% BSA and 0.02% sodium azide.

Basic Information

Clonality

Polyclonal

Immunogen Information

Immunogen

Synthesized peptide derived from part region of human protein

Specificity

UTRO Polyclonal Antibody detects endogenous levels of protein.

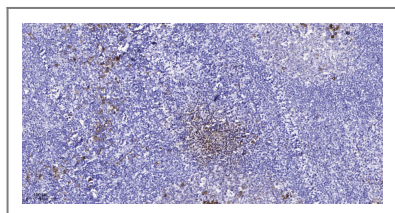
Target Information

Gene name

UTRN DMDL DRP1

Protein Name	Utrophin (Dystrophin-related protein 1) (DRP-1)		
	Organism	Gene ID	UniProt ID
	Human	7402;	P46939;
Cellular Localization	Cell junction, synapse, postsynaptic cell membrane; Peripheral membrane protein; Cytoplasmic side. Cytoplasm, cytoskeleton. Neuromuscular junction.		
Tissue specificity	Isoform 1 has high expression in muscle. Isoforms Up70 and Up140 were found in all the adult and fetal tissues tested and relatively abundant in lung and kidney.		
Function	Function:May play a role in anchoring the cytoskeleton to the plasma membrane.,online information:Utrophin entry,similarity:Contains 1 WW domain.,similarity:Contains 1 ZZ-type zinc finger.,similarity:Contains 2 CH (calponin-homology) domains.,similarity:Contains 20 spectrin repeats.,subcellular location:Neuromuscular junction.,subunit:Interacts with the syntrophins SNTA1; SNTB1 and SNTB2. Interacts with SYNM.,tissue specificity:Muscle.,		

Validation Data



Immunohistochemical analysis of paraffin-embedded human tonsil. 1, Antibody was diluted at 1:200(4° overnight). 2, Tris-EDTA,pH9.0 was used for antigen retrieval. 3,Secondary antibody was diluted at 1:200(room temperature, 45min).

Contact information

Orders: order.cn@immunoway.com
 Support: support.cn@immunoway.com
 Telephone: 400-8787-807(China)
 Website: <http://www.immunoway.com.cn>
 Address: 2200 Ringwood Ave San Jose, CA 95131 USA



Please scan the QR code to access additional product information:
UTRO Rabbit pAb

For Research Use Only. Not for Use in Diagnostic Procedures.

[Antibody](#) | [ELISA Kits](#) | [Protein](#) | [Reagents](#)