

UB2R2 Rabbit pAb

CatalogNo: YN1497

Key Features

Host Species

- Rabbit

Reactivity

- Human, Mouse

Applications

- WB, ELISA

MW

- 26kD (Observed)

Isotype

- IgG

Recommended Dilution Ratios

WB 1:500-2000

ELISA 1:5000-20000

Storage

Storage*

-15°C to -25°C/1 year (Do not lower than -25°C)

Formulation

Liquid in PBS containing 50% glycerol, 0.5% BSA and 0.02% sodium azide.

Basic Information

Clonality

Polyclonal

Immunogen Information

Immunogen

Synthesized peptide derived from part region of human protein

Specificity

UB2R2 Polyclonal Antibody detects endogenous levels of protein.

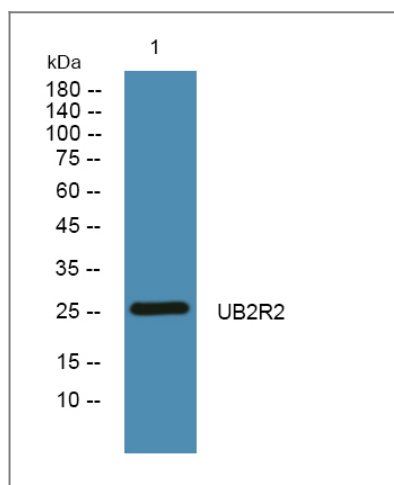
Target Information

Gene name

UBE2R2 CDC34B UBC3B

| | | | |
|------------------------------|--|-------------------------|--------------------------|
| Protein Name | Ubiquitin-conjugating enzyme E2 R2 (Ubiquitin carrier protein R2) (Ubiquitin-conjugating enzyme E2-CDC34B) (Ubiquitin-protein ligase R2) | | |
| | Organism | Gene ID | UniProt ID |
| | Human | 54926 ; | Q712K3 ; |
| | Mouse | | Q6ZWZ2 ; |
| Cellular Localization | cytoplasm, | | |
| Tissue specificity | Carcinoma,Ovary,Testis, | | |
| Function | Catalytic activity:ATP + ubiquitin + protein lysine = AMP + diphosphate + protein N-ubiquityllysine.,Function:Catalyzes the covalent attachment of ubiquitin to other proteins. May be involved in degradation of katenin.,pathway:Protein modification; protein ubiquitination.,similarity:Belongs to the ubiquitin-conjugating enzyme family.,subunit:When phosphorylated, interacts with beta-TrCP (BTRC)., | | |

Validation Data



Western blot analysis of lysates from SW480 cells, primary antibody was diluted at 1:1000, 4° over night

Contact information

Orders: order.cn@immunoway.com
 Support: support.cn@immunoway.com
 Telephone: 400-8787-807(China)
 Website: <http://www.immunoway.com.cn>
 Address: 2200 Ringwood Ave San Jose, CA 95131 USA



Please scan the QR code to access additional product information:
UB2R2 Rabbit pAb

