

UB2Q2 Rabbit pAb

CatalogNo: YN1496

Key Features

Host Species

- Rabbit

Reactivity

- Human, Mouse

Applications

- WB, ELISA

MW

- 41kD (Observed)

Isotype

- IgG

Recommended Dilution Ratios

WB 1:500-2000

ELISA 1:5000-20000

Storage

Storage*

-15°C to -25°C/1 year (Do not lower than -25°C)

Formulation

Liquid in PBS containing 50% glycerol, and 0.02% sodium azide.

Basic Information

Clonality

Polyclonal

Immunogen Information

Immunogen

Synthesized peptide derived from part region of human protein

Specificity

UB2Q2 Polyclonal Antibody detects endogenous levels of protein.

Target Information

Gene name

UBE2Q2

Protein Name Ubiquitin-conjugating enzyme E2 Q2 (Ubiquitin carrier protein Q2) (Ubiquitin-protein ligase Q2)

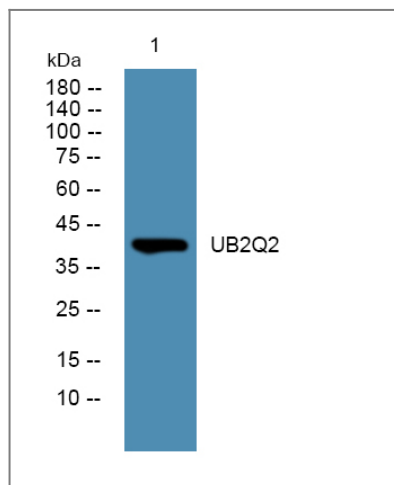
Organism	Gene ID	UniProt ID
Human	92912;	Q8WVN8;
Mouse		Q8K2Z8;

Cellular Localization Cytoplasm .

Tissue specificity Detected in hypopharyngeal head and neck squamous cell carcinoma, in tumor masses and invasive epithelium.

Function Catalytic activity:ATP + ubiquitin + protein lysine = AMP + diphosphate + protein N-ubiquityllysine.,Function:Catalyzes the covalent attachment of ubiquitin to other proteins.,pathway:Protein modification; protein ubiquitination.,similarity:Belongs to the ubiquitin-conjugating enzyme family.,tissue specificity:Detected in hypopharyngeal head and neck squamous cell carcinoma, in tumor masses and invasive epithelium.,

Validation Data



Western blot analysis of lysates from U2OS cells, primary antibody was diluted at 1:1000, 4° over night

Contact information

Orders: order.cn@immunoway.com
Support: support.cn@immunoway.com
Telephone: 400-8787-807(China)
Website: <http://www.immunoway.com.cn>
Address: 2200 Ringwood Ave San Jose, CA 95131 USA



Please scan the QR code to access additional product information:
UB2Q2 Rabbit pAb

