

UB2Q1 Rabbit pAb

CatalogNo: YN1495

Key Features

Host Species

- Rabbit

Reactivity

- Human, Mouse

Applications

- WB, ELISA

MW

- 46kD (Observed)

Isotype

- IgG

Storage

Storage* -15°C to -25°C/1 year (Do not lower than -25°C)

Formulation Liquid in PBS containing 50% glycerol, 0.5% BSA and 0.02% sodium azide.

Recommended Dilution Ratios

WB 1:500-2000

ELISA 1:5000-20000

Basic Information

Clonality Polyclonal

Immunogen Information

Immunogen Synthesized peptide derived from part region of human protein. AA range:85-185

Specificity UB2Q1 Polyclonal Antibody detects endogenous levels of protein.

Target Information

Gene name UBE2Q1 NICE5 UBE2Q PRO3094

Protein Name Ubiquitin-conjugating enzyme E2 Q1 (Protein NICE-5) (Ubiquitin carrier protein Q1) (Ubiquitin-protein ligase Q1)

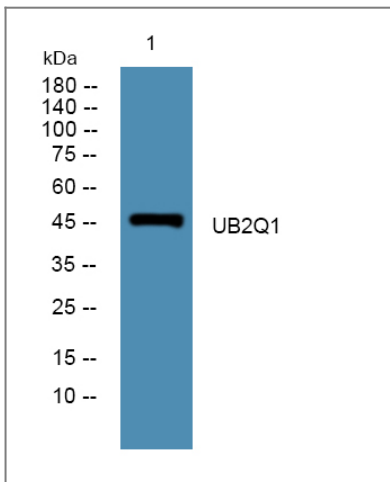
Organism	Gene ID	UniProt ID
Human	55585;	Q7Z7E8;
Mouse		Q7TSS2;

Cellular Localization Nucleus . Cell projection, filopodium . Cytoplasm, cytosol .

Tissue specificity Widely expressed.

Function Catalytic activity:ATP + ubiquitin + protein lysine = AMP + diphosphate + protein N-ubiquityllysine.,Function:Catalyzes the covalent attachment of ubiquitin to other proteins.,pathway:Protein modification; protein ubiquitination.,similarity:Belongs to the ubiquitin-conjugating enzyme family.,tissue specificity:Widely expressed.,

Validation Data



Western blot analysis of lysates from U2OS cells, primary antibody was diluted at 1:1000, 4° over night

Contact information

Orders: order.cn@immunoway.com
Support: support.cn@immunoway.com
Telephone: 400-8787-807(China)
Website: <http://www.immunoway.com.cn>
Address: 2200 Ringwood Ave San Jose, CA 95131 USA



Please scan the QR code to access additional product information:
UB2Q1 Rabbit pAb