

## UB2E3 Rabbit pAb

CatalogNo: YN1490

### Key Features

#### Host Species

- Rabbit

#### Reactivity

- Human, Mouse

#### Applications

- WB, ELISA

#### MW

- 22kD (Observed)

#### Isotype

- IgG

### Recommended Dilution Ratios

**WB 1:500-2000**

**ELISA 1:5000-20000**

### Storage

#### Storage\*

-15°C to -25°C/1 year (Do not lower than -25°C)

#### Formulation

Liquid in PBS containing 50% glycerol, 0.5% BSA and 0.02% sodium azide.

### Basic Information

#### Clonality

Polyclonal

### Immunogen Information

#### Immunogen

Synthesized peptide derived from part region of human protein

#### Specificity

UB2E3 Polyclonal Antibody detects endogenous levels of protein.

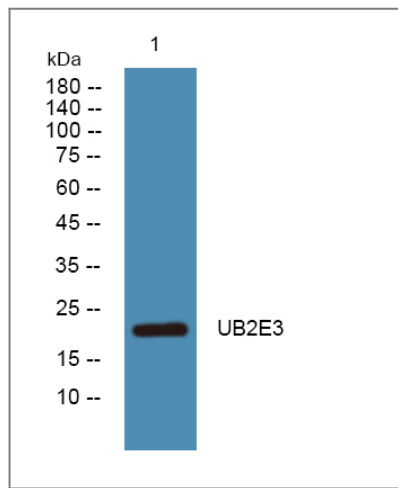
### Target Information

#### Gene name

UBE2E3 UBCE4 UBCH9

<b>Protein Name</b>	Ubiquitin-conjugating enzyme E2 E3 (UbcH9) (Ubiquitin carrier protein E3) (Ubiquitin-conjugating enzyme E2-23 kDa) (Ubiquitin-protein ligase E3)		
	<b>Organism</b>	<b>Gene ID</b>	<b>UniProt ID</b>
	Human	<a href="#">10477;</a>	<a href="#">Q969T4;</a>
	Mouse		<a href="#">P52483;</a>
<b>Cellular Localization</b>	Nucleus . Cytoplasm . Shuttles between the nucleus and cytoplasm in a IPO11-dependent manner.		
<b>Tissue specificity</b>	Ubiquitously expressed at low levels. Highly expressed in skeletal muscle.		
<b>Function</b>	Catalytic activity:ATP + ubiquitin + protein lysine = AMP + diphosphate + protein N-ubiquityllysine.,Function:Catalyzes the covalent attachment of ubiquitin to other proteins. Participates in the regulation of transepithelial sodium transport in renal cells. May be involved in cell growth arrest.,pathway:Protein modification; protein ubiquitination.,similarity:Belongs to the ubiquitin-conjugating enzyme family.,subcellular location:Shuttles between the nucleus and cytoplasm in a IPO11-dependent manner.,subunit:The ubiquitin-loaded form interacts specifically with importin-11 (IPO11), leading to its import into the nucleus (By similarity). Interacts with NEDD4L.,tissue specificity:Ubiquitously expressed at low levels. Highly expressed in skeletal muscle.,		

## | Validation Data



Western blot analysis of lysates from SW480 cells, primary antibody was diluted at 1:1000, 4°over night

## | Contact information

Orders: [order.cn@immunoway.com](mailto:order.cn@immunoway.com)  
 Support: [support.cn@immunoway.com](mailto:support.cn@immunoway.com)  
 Telephone: 400-8787-807(China)  
 Website: <http://www.immunoway.com.cn>  
 Address: 2200 Ringwood Ave San Jose, CA 95131 USA



Please scan the QR code  
 to access additional  
 product information:  
**UB2E3 Rabbit pAb**

