

UB2L6 Rabbit pAb

CatalogNo: YN1482

Key Features

Host Species

- Rabbit

Reactivity

- Human,Rat,Mouse

Applications

- WB,ELISA

MW

- 16kD (Observed)

Isotype

- IgG

Recommended Dilution Ratios

WB 1:500-2000

ELISA 1:5000-20000

Storage

Storage*

-15°C to -25°C/1 year(Do not lower than -25°C)

Formulation

Liquid in PBS containing 50% glycerol, 0.5% BSA and 0.02% sodium azide.

Basic Information

Clonality

Polyclonal

Immunogen Information

Immunogen

Synthesized peptide derived from part region of human protein

Specificity

UB2L6 Polyclonal Antibody detects endogenous levels of protein.

Target Information

Gene name

UBE2L6 UBCH8

Protein Name Ubiquitin/ISG15-conjugating enzyme E2 L6 (Retinoic acid-induced gene B protein) (RIG-B) (UbcH8) (Ubiquitin carrier protein L6) (Ubiquitin-protein ligase L6)

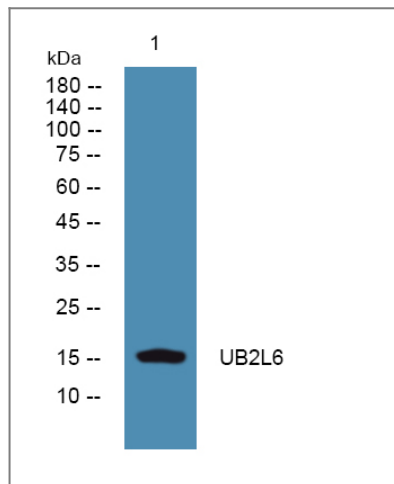
| Organism | Gene ID | UniProt ID |
|----------|-----------------------|-------------------------|
| Human | 9246; | O14933; |
| Mouse | | Q9QZU9; |
| Rat | | Q4V8J2; |

Cellular Localization nucleoplasm,cytosol,

Tissue specificity Present in natural killer cells (at protein level).

Function Catalytic activity:ATP + ubiquitin + protein lysine = AMP + diphosphate + protein N-ubiquityllysine.,Function:Catalyzes the covalent attachment of ubiquitin or ISG15 to other proteins. Functions in the E6/E6-AP-induced ubiquitination of p53/TP53.,induction:By interferon beta.,pathway:Protein modification; protein ubiquitination.,similarity:Belongs to the ubiquitin-conjugating enzyme family.,subunit:Interacts with RNF19A, RNF19B and RNF144B.,tissue specificity:Present in natural killer cells (at protein level).,

Validation Data



Western blot analysis of lysates from Jurkat cells, primary antibody was diluted at 1:1000, 4° over night

Contact information

Orders: order.cn@immunoway.com
Support: support.cn@immunoway.com
Telephone: 400-8787-807(China)
Website: <http://www.immunoway.com.cn>
Address: 2200 Ringwood Ave San Jose, CA 95131 USA



Please scan the QR code to access additional product information:
UB2L6 Rabbit pAb

