

TBCB Rabbit pAb

CatalogNo: YN1455

Key Features

Host Species

- Rabbit

Reactivity

- Human, Mouse

Applications

- WB, ELISA

MW

- 26kD (Observed)

Isotype

- IgG

Recommended Dilution Ratios

WB 1:500-2000

ELISA 1:5000-20000

Storage

Storage*

-15°C to -25°C/1 year (Do not lower than -25°C)

Formulation

Liquid in PBS containing 50% glycerol, 0.5% BSA and 0.02% sodium azide.

Basic Information

Clonality

Polyclonal

Immunogen Information

Immunogen

Synthesized peptide derived from part region of human protein

Specificity

TBCB Polyclonal Antibody detects endogenous levels of protein.

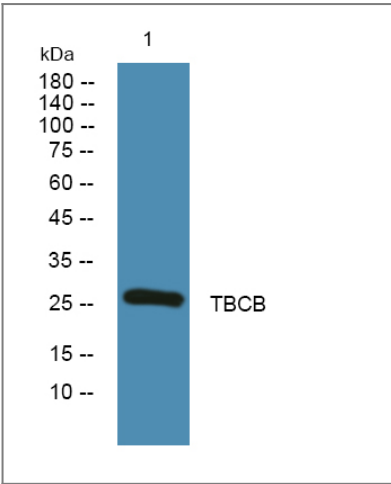
Target Information

Gene name

TBCB CG22 CKAP1

Protein Name	Tubulin-folding cofactor B (Cytoskeleton-associated protein 1) (Cytoskeleton-associated protein CKAPI) (Tubulin-specific chaperone B)		
	Organism	Gene ID	UniProt ID
	Human	1155;	Q99426;
	Mouse		Q9D1E6;
Cellular Localization	Cytoplasm . Cytoplasm, cytoskeleton . Colocalizes with microtubules. In differentiated neurons, located in the cytoplasm. In differentiating neurons, accumulates at the growth cone. .		
Tissue specificity	Found in most tissues.		
Function	Function:Binds to alpha-tubulin folding intermediates after their interaction with cytosolic chaperonin in the pathway leading from newly synthesized tubulin to properly folded heterodimer. Involved in regulation of tubulin heterodimer dissociation. May function as a negative regulator of axonal growth.,PTM:Phosphorylation by PAK1 is required for normal function. Phosphorylated upon DNA damage, probably by ATM or ATR.,PTM:Ubiquitinated in the presence of GAN which targets it for degradation by the proteasome.,similarity:Belongs to the TBCB family.,similarity:Contains 1 CAP-Gly domain.,subcellular location:Colocalizes with microtubules. In differentiated neurons, located in the cytoplasm. In differentiating neurons, accumulates at the growth cone.,subunit:Supercomplex made of cofactors A to E. Cofactors A and D function by capturing and stabilizing tubulin in a quasi-native conformation. Cofactor E binds to the cofactor D-tubulin complex; interaction with cofactor C then causes the release of tubulin polypeptides that are committed to the native state. Cofactors B and E can form a heterodimer which binds to alpha-tubulin and enhances their ability to dissociate tubulin heterodimers. Binds to GAN.,tissue specificity:Found in most tissues.,		

| Validation Data



Western blot analysis of lysates from SH-SY5Y cells, primary antibody was diluted at 1:1000, 4°over night

| Contact information

Orders: order.cn@immunoway.com
Support: support.cn@immunoway.com
Telephone: 400-8787-807(China)
Website: <http://www.immunoway.com.cn>
Address: 2200 Ringwood Ave San Jose, CA 95131 USA



Please scan the QR code
to access additional
product information:
TBCB Rabbit pAb

For Research Use Only. Not for Use in Diagnostic Procedures.

[Antibody](#) | [ELISA Kits](#) | [Protein](#) | [Reagents](#)