

## SCRT1 Rabbit pAb

CatalogNo: YN1441

### Key Features

#### Host Species

- Rabbit

#### Reactivity

- Human, Mouse

#### Applications

- WB, ELISA

#### MW

- 38kD (Observed)

#### Isotype

- IgG

### Storage

**Storage\*** -15°C to -25°C/1 year (Do not lower than -25°C)

**Formulation** Liquid in PBS containing 50% glycerol, 0.5% BSA and 0.02% sodium azide.

### Recommended Dilution Ratios

**WB 1:500-2000**

**ELISA 1:5000-20000**

### Basic Information

**Clonality** Polyclonal

### Immunogen Information

**Immunogen** Synthesized peptide derived from part region of human protein. AA range:144-244

**Specificity** SCRT1 Polyclonal Antibody detects endogenous levels of protein.

### Target Information

**Gene name** SCRT1

**Protein Name** Transcriptional repressor scratch 1 (Scratch homolog 1 zinc finger protein) (SCRT) (Scratch 1) (hScrt)

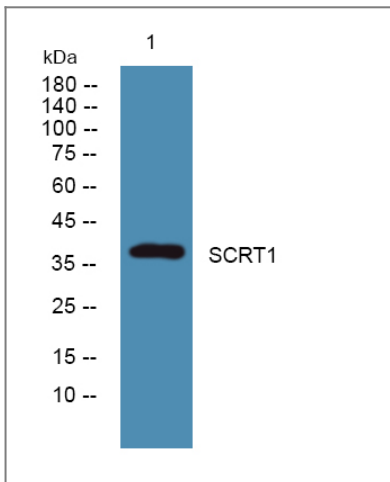
Organism	Gene ID	UniProt ID
Human	<a href="#">83482</a> ;	<a href="#">Q9BWW7</a> ;
Mouse		<a href="#">Q99M85</a> ;

**Cellular Localization** Nucleus .

**Tissue specificity** Brain specific.

**Function** Domain:The N-terminal non zinc-finger region mediates the repressor activity.,Function:Transcriptional repressor that binds E-box motif CAGGTG. Can modulate the action of basic helix-loop-helix (bHLH) transcription factors, critical for neuronal differentiation.,similarity:Belongs to the snail C2H2-type zinc-finger protein family.,similarity:Contains 5 C2H2-type zinc fingers.,tissue specificity:Brain specific.,

## Validation Data



Western blot analysis of lysates from DU145 cells, primary antibody was diluted at 1:1000, 4° over night

## Contact information

Orders: [order.cn@immunoway.com](mailto:order.cn@immunoway.com)  
Support: [support.cn@immunoway.com](mailto:support.cn@immunoway.com)  
Telephone: 400-8787-807(China)  
Website: <http://www.immunoway.com.cn>  
Address: 2200 Ringwood Ave San Jose, CA 95131 USA



Please scan the QR code to access additional product information:  
**SCRT1 Rabbit pAb**

