

## PURA Rabbit pAb

CatalogNo: YN1438

### Key Features

**Host Species**

- Rabbit

**Reactivity**

- Human,Rat,Mouse

**Applications**

- WB,ELISA

**MW**

- 35kD (Observed)

**Isotype**

- IgG

### Recommended Dilution Ratios

**WB 1:500-2000****ELISA 1:5000-20000**

### Storage

**Storage\***

-15°C to -25°C/1 year(Do not lower than -25°C)

**Formulation**

Liquid in PBS containing 50% glycerol, and 0.02% sodium azide.

### Basic Information

**Clonality**

Polyclonal

### Immunogen Information

**Immunogen**

Synthesized peptide derived from part region of human protein

**Specificity**

PURA Polyclonal Antibody detects endogenous levels of protein.

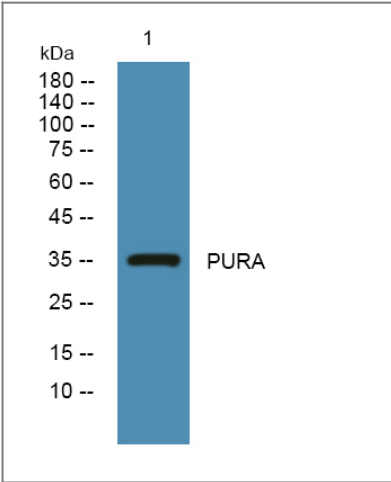
### Target Information

**Gene name**

PURA PUR1

<b>Protein Name</b>	Transcriptional activator protein Pur-alpha (Purine-rich single-stranded DNA-binding protein alpha)		
	<b>Organism</b>	<b>Gene ID</b>	<b>UniProt ID</b>
	Human	<a href="#">5813;</a>	<a href="#">Q00577;</a>
	Mouse		<a href="#">P42669;</a>
	Rat		<a href="#">P86252;</a>
<b>Cellular Localization</b>	Nucleus.		
<b>Tissue specificity</b>	Brain,Epithelium,Fetal liver,PCR rescued clones,		
<b>Function</b>	Function:This is a probable transcription activator that specifically binds the purine-rich single strand of the PUR element located upstream of the MYC gene. May play a role in the initiation of DNA replication and in recombination.,similarity:Belongs to the PUR DNA-binding protein family.,subunit:Homodimer, heterodimer with PURB and heterotrimer with PURB and YBX1/Y-box protein 1.,		

Validation Data



Western blot analysis of lysates from K562 cells, primary antibody was diluted at 1:1000, 4°over night

Contact information

Orders: order.cn@immunoway.com  
Support: support.cn@immunoway.com  
Telephone: 400-8787-807(China)  
Website: http://www.immunoway.com.cn  
Address: 2200 Ringwood Ave San Jose, CA 95131 USA



Please scan the QR code to access additional product information:  
**PURA Rabbit pAb**

