

TM2D1 Rabbit pAb

CatalogNo: YN1413

Key Features

Host Species

- Rabbit

Reactivity

- Human, Mouse

Applications

- WB, ELISA

MW

- 22kD (Observed)

Isotype

- IgG

Recommended Dilution Ratios

WB 1:500-2000

ELISA 1:5000-20000

Storage

Storage*

-15°C to -25°C/1 year (Do not lower than -25°C)

Formulation

Liquid in PBS containing 50% glycerol, 0.5% BSA and 0.02% sodium azide.

Basic Information

Clonality

Polyclonal

Immunogen Information

Immunogen

Synthesized peptide derived from part region of human protein

Specificity

TM2D1 Polyclonal Antibody detects endogenous levels of protein.

Target Information

Gene name

TM2D1 BBP

Protein Name TM2 domain-containing protein 1 (Beta-amyloid-binding protein) (hBBP)

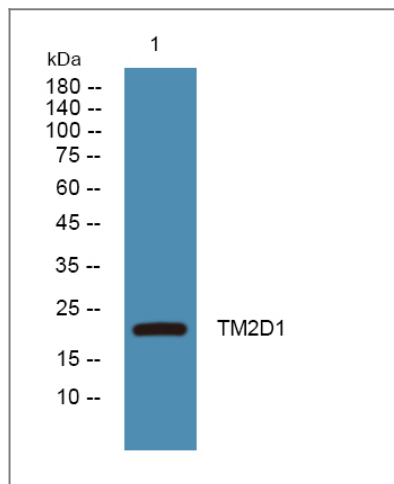
Organism	Gene ID	UniProt ID
Human	83941 ;	Q9BX74 ;
Mouse		Q99MB3 ;

Cellular Localization Membrane ; Multi-pass membrane protein .

Tissue specificity Widely expressed.

Function Caution:Was initially thought (PubMed:11278849) to modulate beta-amyloid toxicity by coupling to G protein. However, PubMed:12836168 showed that this effect is not direct.,Function:May participate to beta-amyloid-induced apoptosis via its interaction with beta-APP42.,PTM:N-glycosylated.,similarity:Belongs to the TM2 family.,subunit:Interacts with beta-APP42 (beta-amyloid protein 42) peptide of APP.,tissue specificity:Widely expressed.,

Validation Data



Western blot analysis of lysates from SW480 cells, primary antibody was diluted at 1:1000, 4° over night

Contact information

Orders: order.cn@immunoway.com
Support: support.cn@immunoway.com
Telephone: 400-8787-807(China)
Website: <http://www.immunoway.com.cn>
Address: 2200 Ringwood Ave San Jose, CA 95131 USA



Please scan the QR code to access additional product information:
TM2D1 Rabbit pAb

