

## CLASR Rabbit pAb

CatalogNo: YN1364

### Key Features

#### Host Species

- Rabbit

#### Reactivity

- Human, Mouse, Rat

#### Applications

- WB, ELISA

#### MW

- 74kD (Observed)

#### Isotype

- IgG

### Recommended Dilution Ratios

WB 1:500-2000

ELISA 1:5000-20000

### Storage

#### Storage\*

-15°C to -25°C/1 year (Do not lower than -25°C)

#### Formulation

Liquid in PBS containing 50% glycerol, 0.5% BSA and 0.02% sodium azide.

### Basic Information

#### Clonality

Polyclonal

### Immunogen Information

#### Immunogen

Synthesized peptide derived from part region of human protein

#### Specificity

CLASR Polyclonal Antibody detects endogenous levels of protein.

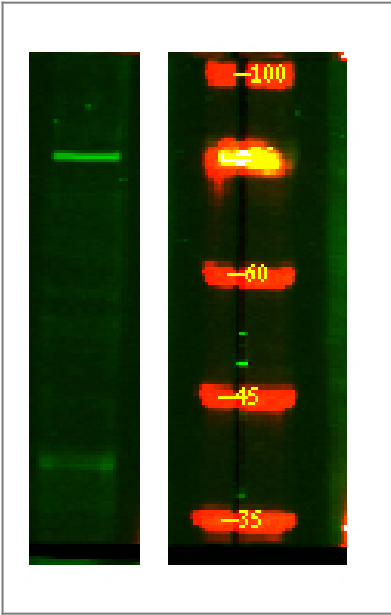
### Target Information

#### Gene name

CLASRP SFRS16 SWAP2 UNQ2428/PRO4988

<b>Protein Name</b>	CLK4-associating serine/arginine rich protein (Splicing factor, arginine/serine-rich 16) (Suppressor of white-apricot homolog 2)		
	<b>Organism</b>	<b>Gene ID</b>	<b>UniProt ID</b>
	Human	<a href="#">11129;</a>	<a href="#">Q8N2M8;</a>
	Mouse		<a href="#">Q8CFC7;</a>
	Rat		<a href="#">Q5HZB6;</a>
<b>Cellular Localization</b>	Nucleus .		
<b>Tissue specificity</b>	Epithelium,Skin,		
<b>Function</b>	Caution:It is uncertain whether Met-1 or Met-16 is the initiator.,Function:Probably functions as an alternative splicing regulator. May regulate the mRNA splicing of genes such as CLK1. May act by regulating members of the CLK kinase family.,PTM:Phosphorylated in vitro by CLK4.,similarity:Belongs to the splicing factor SR family.,subunit:Probably interacts with CLK4.,		

| Validation Data



Western Blot analysis of HEK293 lysis, using primary antibody at 1:1000 dilution. Secondary antibody(catalog#:RS23920) was diluted at 1:10000

| Contact information

Orders: order.cn@immunoway.com  
Support: support.cn@immunoway.com  
Telephone: 400-8787-807(China)  
Website: <http://www.immunoway.com.cn>  
Address: 2200 Ringwood Ave San Jose, CA 95131 USA



Please scan the QR code  
to access additional  
product information:  
**CLASR Rabbit pAb**

---

For Research Use Only. Not for Use in Diagnostic Procedures.

[Antibody](#) | [ELISA Kits](#) | [Protein](#) | [Reagents](#)