

NAC3 Rabbit pAb

CatalogNo: YN1335

Orthogonal Validated 

Key Features

Host Species

- Rabbit

Reactivity

- Human, Mouse, Rat

Applications

- WB, ELISA

MW

- 101kD (Observed)

Isotype

- IgG

Recommended Dilution Ratios

WB 1:500-2000**ELISA 1:5000-20000**

Storage

Storage* -15°C to -25°C/1 year (Do not lower than -25°C)**Formulation** Liquid in PBS containing 50% glycerol, and 0.02% sodium azide.

Basic Information

Clonality Polyclonal

Immunogen Information

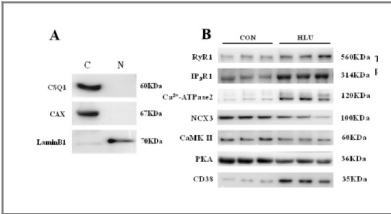
Immunogen Synthesized peptide derived from human protein . at AA range: 530-610**Specificity** NAC3 Polyclonal Antibody detects endogenous levels of protein.

Target Information

Gene name SLC8A3 NCX3

Protein Name	Sodium/calcium exchanger 3 (Na(+)/Ca(2+)-exchange protein 3)		
	Organism	Gene ID	UniProt ID
	Human	6547;	P57103;
	Rat		P70549;
Cellular Localization	Cell membrane ; Multi-pass membrane protein . Perikaryon . Cell projection, dendrite . Cell projection, dendritic spine . Cell membrane, sarcolemma . Cytoplasm, sarcoplasm . Cell junction . Mitochondrion outer membrane ; Multi-pass membrane protein . Cytoplasm, perinuclear region . Endoplasmic reticulum membrane ; Multi-pass membrane protein . Detected at neuromuscular junctions. .		
Tissue specificity	Isoform 2 is expressed in brain and skeletal muscle. Isoform 3 is expressed in excitable cells of brain, retina and skeletal muscle. Isoform 4 is expressed in skeletal muscle.		
Function	enzyme regulation:By intracellular calcium ions.,Function:Rapidly transports Ca(2+) during excitation-contraction coupling. Ca(2+) is extruded from the cell during relaxation so as to prevent overloading of intracellular stores.,similarity:Belongs to the sodium/potassium/calcium exchanger family. SLC8 subfamily.,similarity:Contains 2 Calx-beta domains.,tissue specificity:Isoform 2 is expressed in brain and skeletal muscle; Isoform 3 is expressed in excitable cells of brain, retina and skeletal muscle; Isoform 4 is expressed in skeletal muscle.,		

Validation Data



New Findings: Hindlimb Unloading Causes Nucleocytoplasmic Ca2+ Overload and DNA Damage in Skeletal Muscle Cells Yunfang Gao WB Rat muscle cell

Contact information

Orders:

order.cn@immunoway.com

Support:

support.cn@immunoway.com

Telephone:

400-8787-807(China)

Website:

http://www.immunoway.com.cn

Address:

2200 Ringwood Ave San Jose, CA 95131 USA



Please scan the QR code to access additional product information:
NAC3 Rabbit pAb