

CCL25 Rabbit pAb

CatalogNo: YN1321

Key Features

Host Species

- Rabbit

Reactivity

- Human, Mouse

Applications

- WB, ELISA

MW

- 16kD (Observed)

Isotype

- IgG

Recommended Dilution Ratios

WB 1:500-2000**ELISA 1:5000-20000**

Storage

Storage*

-15°C to -25°C/1 year (Do not lower than -25°C)

Formulation

Liquid in PBS containing 50% glycerol, 0.5% BSA and 0.02% sodium azide.

Basic Information

Clonality

Polyclonal

Immunogen Information

Immunogen

Synthesized peptide derived from human protein . at AA range: 30-110

Specificity

CCL25 Polyclonal Antibody detects endogenous levels of protein.

Target Information

Gene name

CCL25 SCYA25 TECK

Protein Name C-C motif chemokine 25 (Chemokine TECK) (Small-inducible cytokine A25) (Thymus-expressed chemokine)

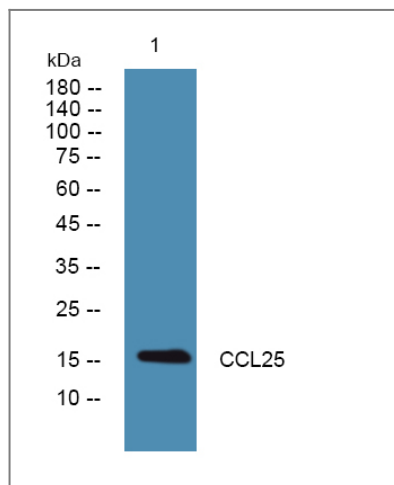
Organism	Gene ID	UniProt ID
Human	6370 ;	O15444 ;
Mouse		O35903 ;

Cellular Localization Secreted.

Tissue specificity Specifically expressed by thymic dendritic cells. High levels in thymus and small intestine.

Function Function:Potentially involved in T-cell development. Recombinant protein shows chemotactic activity on thymocytes, macrophages, THP-1 cells, and dendritic cells but is inactive on peripheral blood lymphocytes and neutrophils. Binds to CCR9. Isoform 2 is an antagonist of isoform 1.,online information:CCL25 entry,similarity:Belongs to the intercrine beta (chemokine CC) family.,tissue specificity:Specifically expressed by thymic dendritic cells. High levels in thymus and small intestine.,

Validation Data



Western blot analysis of lysates from HCT116 cells, primary antibody was diluted at 1:1000, 4° over night

Contact information

Orders: order.cn@immunoway.com
Support: support.cn@immunoway.com
Telephone: 400-8787-807(China)
Website: <http://www.immunoway.com.cn>
Address: 2200 Ringwood Ave San Jose, CA 95131 USA



Please scan the QR code to access additional product information:
CCL25 Rabbit pAb

