

SGMR1 Rabbit pAb

CatalogNo: YN1313

Key Features

Host Species

- Rabbit

Reactivity

- Human,Rat,Mouse

Applications

- WB,ELISA

MW

- 24kD (Observed)

Isotype

- IgG

Recommended Dilution Ratios

WB 1:500-2000**ELISA 1:5000-20000**

Storage

Storage*

-15°C to -25°C/1 year(Do not lower than -25°C)

Formulation

Liquid in PBS containing 50% glycerol, and 0.02% sodium azide.

Basic Information

Clonality

Polyclonal

Immunogen Information

Immunogen

Synthesized peptide derived from human protein . at AA range: 90-170

Specificity

SGMR1 Polyclonal Antibody detects endogenous levels of protein.

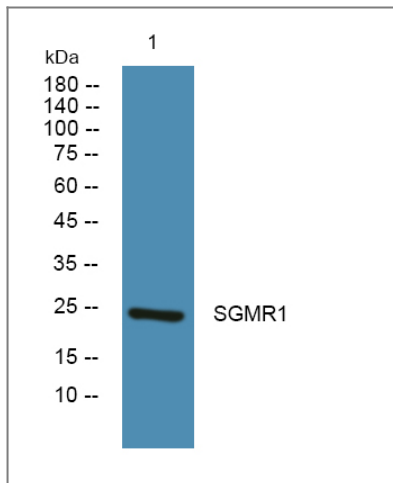
Target Information

Gene name

SIGMAR1 OPRS1 SRBP AAG8

Protein Name	Sigma non-opioid intracellular receptor 1 (Aging-associated gene 8 protein) (SR31747-binding protein) (SR-BP) (Sigma 1-type opioid receptor) (SIG-1R) (Sigma1-receptor) (Sigma1R) (hSigmaR1)		
	Organism	Gene ID	UniProt ID
	Human	10280 ;	Q99720 ;
	Mouse		O55242 ;
	Rat		Q9R0C9 ;
Cellular Localization	Nucleus inner membrane . Nucleus outer membrane . Nucleus envelope . Cytoplasmic vesicle . Endoplasmic reticulum membrane . Membrane ; Single-pass membrane protein . Lipid droplet . Cell junction. Cell membrane . Cell projection, growth cone. Cell junction, synapse, postsynaptic density membrane . During interphase, detected at the inner and outer nuclear membrane and the endoplasmic reticulum. Detected on cytoplasmic vesicles during mitosis (PubMed:10406945). Targeted to lipid droplets, cholesterol and galactosylceramide-enriched domains of the endoplasmic reticulum. Accumulation at the endoplasmic reticulum is prominent in alpha-motor neurons of patients with amyotrophic lateral sclerosis (PubMed:23314020). Enriched at cell-cell communication regions, growth cone and postsynaptic structures. Localization is modulated by ligand-binding. In motor neurons it is enriched at cholinergic postsynaptic densities (By similarity). .		
Tissue specificity	Widely expressed with higher expression in liver, colon, prostate, placenta, small intestine, heart and pancreas. Expressed in the retina by retinal pigment epithelial cells. Expressed in alpha-motor neurons (PubMed:23314020).		
Function	Function:Functions in lipid transport from the endoplasmic reticulum and is involved in a wide array of cellular functions probably through regulation of the biogenesis of lipid microdomains at the plasma membrane. Involved in the regulation of different receptors it plays a role in BDNF signaling and EGF signaling. Also regulates ion channels like the potassium channel and could modulate neurotransmitter release. Plays a role in calcium signaling through modulation together with ANK2 of the ITP3R-dependent calcium efflux at the endoplasmic reticulum. Plays a role in several other cell functions including proliferation, survival and death. Originally identified for its ability to bind various psychoactive drugs it is involved in learning processes, memory and mood alteration.,miscellaneous:Depletion of OPRS1 by RNAi inhibits growth and survival signaling cascades and induces cell death. The OSPR1 antagonist rimcazole produces the same effect.,online information:Sigma-1 receptor entry,similarity:Belongs to the ERG2 family.,subcellular location:Targeted to lipid droplets, cholesterol and galactosylceramide-enriched domains of the endoplasmic reticulum. Enriched at cell-cell communication regions, growth cone and postsynaptic structures. Localization is modulated by ligand-binding.,tissue specificity:Widely expressed with higher expression in liver, colon, prostate, placenta, small intestine, heart and pancreas. Expressed in the retina by retinal pigment epithelial cells.,		

Validation Data



Western blot analysis of lysates from A431 cells, primary antibody was diluted at 1:1000, 4°over night

Contact information

Orders: order.cn@immunoway.com
Support: support.cn@immunoway.com
Telephone: 400-8787-807(China)
Website: <http://www.immunoway.com.cn>
Address: 2200 Ringwood Ave San Jose, CA 95131 USA



Please scan the QR code
to access additional
product information:
SGMR1 Rabbit pAb

For Research Use Only. Not for Use in Diagnostic Procedures.

[Antibody](#) | [ELISA Kits](#) | [Protein](#) | [Reagents](#)