

SH3G3 Rabbit pAb

CatalogNo: YN1309

Key Features

Host Species

- Rabbit

Reactivity

- Human,Rat,Mouse

Applications

- WB,ELISA

MW

- 38kD (Observed)

Isotype

- IgG

Recommended Dilution Ratios

WB 1:500-2000

ELISA 1:5000-20000

Storage

Storage*

-15°C to -25°C/1 year(Do not lower than -25°C)

Formulation

Liquid in PBS containing 50% glycerol, 0.5% BSA and 0.02% sodium azide.

Basic Information

Clonality

Polyclonal

Immunogen Information

Immunogen

Synthesized peptide derived from part region of human protein

Specificity

SH3G3 Polyclonal Antibody detects endogenous levels of protein.

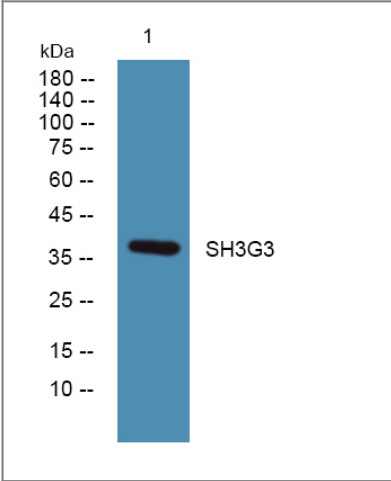
Target Information

Gene name

SH3GL3 CNSA3 SH3D2C

Protein Name	Endophilin-A3 (EEN-B2) (Endophilin-3) (SH3 domain protein 2C) (SH3 domain-containing GRB2-like protein 3)		
	Organism	Gene ID	UniProt ID
	Human	6457;	Q99963;
	Mouse		Q62421;
	Rat		O35180;
Cellular Localization	Cytoplasm . Early endosome membrane ; Peripheral membrane protein . Associated with postsynaptic endosomes in hippocampal neurons. Associated with presynaptic endosomes in olfactory neurons. .		
Tissue specificity	Brain and testis.		
Function	Domain:An N-terminal amphipathic helix, the BAR domain and a second amphipathic helix inserted into helix 1 of the BAR domain (N-BAR domain) induce membrane curvature and bind curved membranes.,Function:Implicated in endocytosis. May recruit other proteins to membranes with high curvature.,similarity:Belongs to the endophilin family.,similarity:Contains 1 BAR domain.,similarity:Contains 1 SH3 domain.,subcellular location:Associated with postsynaptic endosomes in hippocampal neurons. Associated with presynaptic endosomes in olfactory neurons.,subunit:Interacts with ARC (By similarity). Interacts with DNMI1, SGIP1 and SYNJ1. Interacts with the huntingtin exon 1 protein (HDEX1P) containing a glutamine repeat in the pathological range and promotes formation of insoluble polyglutamine-containing aggregates in vivo.,tissue specificity:Brain and testis.,		

Validation Data



Western blot analysis of lysates from K562 cells, primary antibody was diluted at 1:1000, 4°over night

Contact information

Orders: order.cn@immunoway.com
Support: support.cn@immunoway.com
Telephone: 400-8787-807(China)
Website: <http://www.immunoway.com.cn>
Address: 2200 Ringwood Ave San Jose, CA 95131 USA



Please scan the QR code
to access additional
product information:
SH3G3 Rabbit pAb

For Research Use Only. Not for Use in Diagnostic Procedures.

[Antibody](#) | [ELISA Kits](#) | [Protein](#) | [Reagents](#)