

SASH3 Rabbit pAb

CatalogNo: YN1308

Key Features

Host Species

- Rabbit

Reactivity

- Human, Mouse

Applications

- WB, ELISA

MW

- 41kD (Observed)

Isotype

- IgG

Recommended Dilution Ratios

WB 1:500-2000

ELISA 1:5000-20000

Storage

Storage*

-15°C to -25°C/1 year (Do not lower than -25°C)

Formulation

Liquid in PBS containing 50% glycerol, 0.5% BSA and 0.02% sodium azide.

Basic Information

Clonality

Polyclonal

Immunogen Information

Immunogen

Synthesized peptide derived from part region of human protein

Specificity

SASH3 Polyclonal Antibody detects endogenous levels of protein.

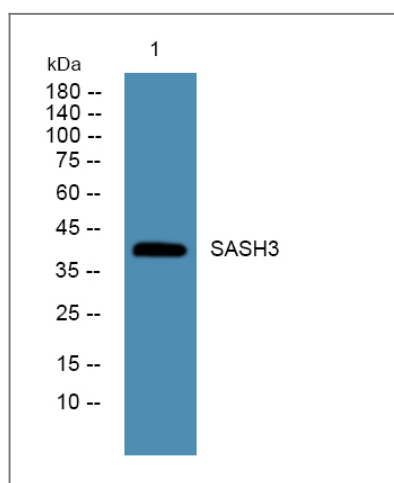
Target Information

Gene name

SASH3 CXorf9 SLY

Protein Name	SAM and SH3 domain-containing protein 3 (SH3 protein expressed in lymphocytes homolog)		
	Organism	Gene ID	UniProt ID
	Human	54440;	O75995;
	Mouse		Q8K352;
Cellular Localization	nucleus,cytoplasm,		
Tissue specificity	Spleen,Testis,		
Function	Function:May function as a signaling adapter protein in lymphocytes.,similarity:Contains 1 SAM (sterile alpha motif) domain.,similarity:Contains 1 SH3 domain.,		

Validation Data



Western blot analysis of lysates from DU145 cells, primary antibody was diluted at 1:1000, 4°over night

Contact information

Orders: order.cn@immunoway.com
 Support: support.cn@immunoway.com
 Telephone: 400-8787-807(China)
 Website: <http://www.immunoway.com.cn>
 Address: 2200 Ringwood Ave San Jose, CA 95131 USA



Please scan the QR code to access additional product information:
SASH3 Rabbit pAb