

## SH21A Rabbit pAb

CatalogNo: YN1293

### Key Features

#### Host Species

- Rabbit

#### Reactivity

- Human, Mouse, Rat

#### Applications

- WB, ELISA

#### MW

- 14kD (Observed)

#### Isotype

- IgG

### Recommended Dilution Ratios

WB 1:500-2000

ELISA 1:5000-20000

### Storage

**Storage\*** -15°C to -25°C/1 year (Do not lower than -25°C)

**Formulation** Liquid in PBS containing 50% glycerol, 0.5% BSA and 0.02% sodium azide.

### Basic Information

**Clonality** Polyclonal

### Immunogen Information

**Immunogen** Synthesized peptide derived from part region of human protein

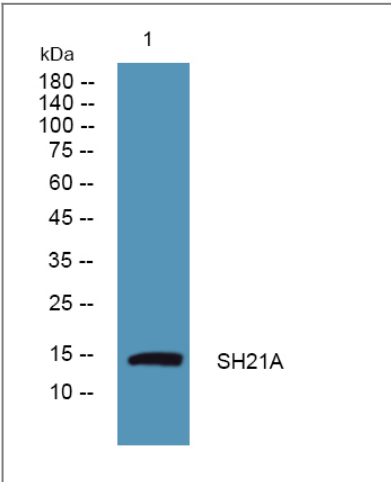
**Specificity** SH21A Polyclonal Antibody detects endogenous levels of protein.

### Target Information

**Gene name** SH2D1A DSHP SAP

|                              |   |                       |                         |
|------------------------------|---|-----------------------|-------------------------|
| <b>Protein Name</b>          | SH2 domain-containing protein 1A (Duncan disease SH2-protein) (Signaling lymphocytic activation molecule-associated protein) (SLAM-associated protein) (T-cell signal transduction molecule SAP)  |                       |                         |
|                              | <b>Organism</b>   | <b>Gene ID</b>        | <b>UniProt ID</b>       |
|                              | Human   | <a href="#">4068;</a> | <a href="#">O60880;</a> |
|                              | Mouse   |                       | <a href="#">O88890;</a> |
|                              | Rat   |                       | <a href="#">B2RZ59;</a> |
| <b>Cellular Localization</b> | Cytoplasm .   |                       |                         |
| <b>Tissue specificity</b>    | Expressed at a high level in thymus and lung, with a lower level of expression in spleen and liver. Expressed in peripheral blood leukocytes, including T-lymphocytes. Tends to be expressed at lower levels in peripheral blood leukocytes in patients with rheumatoid arthritis.  |                       |                         |
| <b>Function</b>              | Disease:Defects in SH2D1A are a cause of lymphoproliferative syndrome X-linked type 1 (XLP1) [MIM:308240]; also known as X-linked lymphoproliferative disease (XLPD) or Duncan disease. XLP is a rare immunodeficiency characterized by extreme susceptibility to infection with Epstein-Barr virus (EBV). Symptoms include severe or fatal mononucleosis, acquired hypogammaglobulinemia, pancytopenia and malignant lymphoma.,Function:Inhibitor of the SLAM self-association. Acts by blocking recruitment of the SH2-domain-containing signal-transduction molecule SHP-2 to a docking site in the SLAM cytoplasmic region. Mediates interaction between FYN and SLAMF1.,online information:SH2D1A mutation db,similarity:Contains 1 SH2 domain.,subunit:Interacts with CD84, CD244, LY9, SLAMF1 and FYN.,tissue specificity:Expressed at a high level in thymus and lung, with a lower level of expression in spleen and liver., |                       |                         |

Validation Data



Western blot analysis of lysates from HCT116 cells, primary antibody was diluted at 1:1000, 4°over night

Contact information

Orders: order.cn@immunoway.com  
Support: support.cn@immunoway.com  
Telephone: 400-8787-807(China)  
Website: <http://www.immunoway.com.cn>  
Address: 2200 Ringwood Ave San Jose, CA 95131 USA



Please scan the QR code  
to access additional  
product information:  
**SH21A Rabbit pAb**

---

For Research Use Only. Not for Use in Diagnostic Procedures.

[Antibody](#) | [ELISA Kits](#) | [Protein](#) | [Reagents](#)