

## SPA9 Rabbit pAb

CatalogNo: YN1287

### Key Features

**Host Species**

- Rabbit

**Reactivity**

- Human, Mouse

**Applications**

- WB, ELISA

**MW**

- 45kD (Observed)

**Isotype**

- IgG

### Recommended Dilution Ratios

**WB 1:500-2000****ELISA 1:5000-20000**

### Storage

**Storage\***

-15°C to -25°C/1 year (Do not lower than -25°C)

**Formulation**

Liquid in PBS containing 50% glycerol, 0.5% BSA and 0.02% sodium azide.

### Basic Information

**Clonality**

Polyclonal

### Immunogen Information

**Immunogen**

Synthesized peptide derived from part region of human protein

**Specificity**

SPA9 Polyclonal Antibody detects endogenous levels of protein.

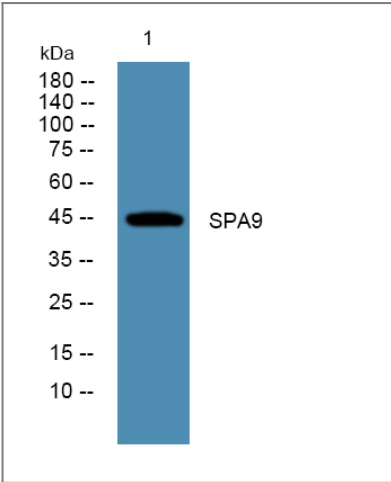
### Target Information

**Gene name**

SERPINA9 GCET1 SERPINA11 UNQ692/PRO1337

Protein Name	Serpin A9 (Centerin) (Germinal center B-cell-expressed transcript 1 protein)		
	Organism	Gene ID	UniProt ID
	Human	<a href="#">327657</a> ;	<a href="#">Q86WD7</a> ;
	Mouse		<a href="#">Q9D7D2</a> ;
Cellular Localization	[Isoform 1]: Secreted.; [Isoform 2]: Cytoplasm .; [Isoform 3]: Cytoplasm .; [Isoform 4]: Cytoplasm .; [Isoform 5]: Cytoplasm .; [Isoform 6]: Cytoplasm .; [Isoform 7]: Membrane ; Single-pass type II membrane protein .		
Tissue specificity	Highly expressed in normal germinal center (GC) B-cells and GC B-cell-derived malignancies.		
Function	similarity:Belongs to the serpin family.,tissue specificity:Highly expressed in normal germinal center (GC) B-cells and GC B-cell-derived malignancies.,		

Validation Data



Western blot analysis of lysates from K562 cells, primary antibody was diluted at 1:1000, 4°over night

Contact information

Orders: order.cn@immunoway.com  
Support: support.cn@immunoway.com  
Telephone: 400-8787-807(China)  
Website: http://www.immunoway.com.cn  
Address: 2200 Ringwood Ave San Jose, CA 95131 USA



Please scan the QR code to access additional product information:  
**SPA9 Rabbit pAb**