

CNEP1 Rabbit pAb

CatalogNo: YN1284

Key Features

Host Species

- Rabbit

Reactivity

- Human,Rat,Mouse

Applications

- WB,ELISA

MW

- 26kD (Observed)

Isotype

- IgG

Recommended Dilution Ratios

WB 1:500-2000

ELISA 1:5000-20000

Storage

Storage*

-15°C to -25°C/1 year(Do not lower than -25°C)

Formulation

Liquid in PBS containing 50% glycerol, 0.5% BSA and 0.02% sodium azide.

Basic Information

Clonality

Polyclonal

Immunogen Information

Immunogen

Synthesized peptide derived from human protein . at AA range: 100-180

Specificity

CNEP1 Polyclonal Antibody detects endogenous levels of protein.

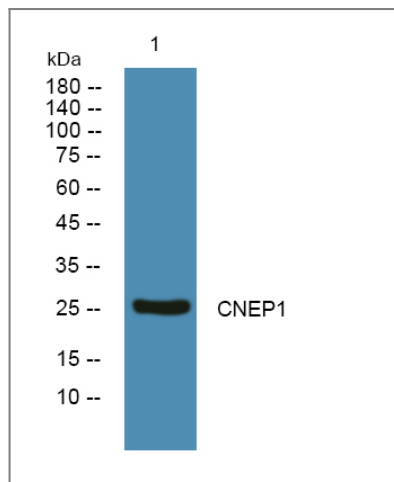
Target Information

Gene name

CTDNEP1 DULLARD

Protein Name	CTD nuclear envelope phosphatase 1 (Serine/threonine-protein phosphatase dullard)		
	Organism	Gene ID	UniProt ID
	Human	23399;	O95476;
	Mouse		Q3TP92;
	Rat		Q3B7T6;
Cellular Localization	Endoplasmic reticulum membrane; Single-pass membrane protein. Nucleus membrane; Single-pass membrane protein.		
Tissue specificity	Muscle specific with lower expression in other metabolic tissues.		
Function	Catalytic activity:A phosphoprotein + H(2)O = a protein + phosphate.,Function:Serine/threonine phosphatase which may be required for proper nuclear membrane morphology. Involved in LPIN1 dephosphorylation. May antagonize BMP signaling.,similarity:Belongs to the dullard family.,similarity:Contains 1 FCP1 homology domain.,		

Validation Data



Western blot analysis of lysates from KB cells, primary antibody was diluted at 1:1000, 4° over night

Contact information

Orders: order.cn@immunoway.com
 Support: support.cn@immunoway.com
 Telephone: 400-8787-807(China)
 Website: <http://www.immunoway.com.cn>
 Address: 2200 Ringwood Ave San Jose, CA 95131 USA



Please scan the QR code to access additional product information:
CNEP1 Rabbit pAb

