

RHXF2 Rabbit pAb

CatalogNo: YN1233

Key Features

Host Species

- Rabbit

Reactivity

- Human

Applications

- WB,ELISA

MW

- 31kD (Observed)

Isotype

- IgG

Recommended Dilution Ratios

WB 1:500-2000

ELISA 1:5000-20000

Storage

Storage*

-15°C to -25°C/1 year(Do not lower than -25°C)

Formulation

Liquid in PBS containing 50% glycerol, 0.5% BSA and 0.02% sodium azide.

Basic Information

Clonality

Polyclonal

Immunogen Information

Immunogen

Synthesized peptide derived from human protein . at AA range: 50-130

Specificity

RHXF2 Polyclonal Antibody detects endogenous levels of protein.

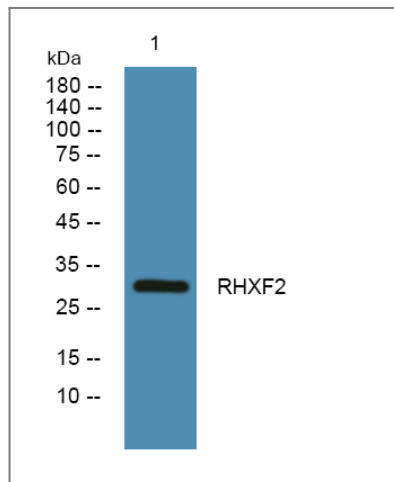
Target Information

Gene name

RHOF2 PEPP2 THG1

Protein Name	RhoX homeobox family member 2 (Paired-like homeobox protein PEPP-2) (Testis homeobox gene 1)		
	Organism	Gene ID	UniProt ID
	Human	84528 ;	Q9BQY4 ;
Cellular Localization	Nucleus .		
Tissue specificity	Testis. Not detected in epididymis nor placenta. In testis, mainly expressed in germ cells, but also detected in somatic cells such as Sertoli cells, Leydig cells and peritubular cells (PubMed:28171660).		
Function	similarity:Belongs to the paired-like homeobox family. PEPP subfamily.,similarity:Contains 1 homeobox DNA-binding domain.,tissue specificity:Testis. Not detected in epididymis nor placenta.,		

Validation Data



Western blot analysis of lysates from A431 cells, primary antibody was diluted at 1:1000, 4° over night

Contact information

Orders: order.cn@immunoway.com
 Support: support.cn@immunoway.com
 Telephone: 400-8787-807(China)
 Website: <http://www.immunoway.com.cn>
 Address: 2200 Ringwood Ave San Jose, CA 95131 USA



Please scan the QR code to access additional product information:
RHXF2 Rabbit pAb