

## ARHGF Rabbit pAb

CatalogNo: YN1222

Orthogonal Validated 

KD/KO Validated 

### Key Features

#### Host Species

- Rabbit

#### Reactivity

- Human, Mouse

#### Applications

- WB, ELISA

#### MW

- 92kD (Observed)

#### Isotype

- IgG

### Storage

**Storage\*** -15°C to -25°C/1 year (Do not lower than -25°C)

**Formulation** Liquid in PBS containing 50% glycerol, 0.5% BSA and 0.02% sodium azide.

### Recommended Dilution Ratios

**WB 1:500-2000**

**ELISA 1:5000-20000**

### Basic Information

**Clonality** Polyclonal

### Immunogen Information

**Immunogen** Synthesized peptide derived from human protein . at AA range: 560-640

**Specificity** ARHGF Polyclonal Antibody detects endogenous levels of protein.

### Target Information

**Gene name** ARHGEF15 KIAA0915

**Protein Name** Rho guanine nucleotide exchange factor 15 (Ephexin-5) (E5) (Vsm-RhoGEF)

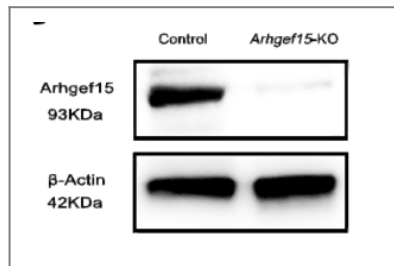
Organism	Gene ID	UniProt ID
Human	<a href="#">22899</a> ;	<a href="#">O94989</a> ;
Mouse		<a href="#">Q5FWH6</a> ;

**Cellular Localization** Cell projection, dendrite . Expressed exclusively in dendrites of the developing hippocampus. .

**Tissue specificity** Expressed in the vascular smooth muscle of coronary artery.

**Function** Function:Specific GEF for RhoA activation and the regulation of vascular smooth muscle contractility.,PTM:Phosphorylated on tyrosine residues upon EFNA1 stimulation.,similarity:Contains 1 DH (DBL-homology) domain.,subunit:Interacts with EPHA4.,tissue specificity:Expressed in the vascular smooth muscle of coronary artery.,

## Validation Data



ARHGEF15 is expressed in undifferentiated spermatogonia but is not required for spermatogenesis in mice Reproductive Biology Qi-En Yang WB Mouse testicular tissues

## Contact information

Orders: [order.cn@immunoway.com](mailto:order.cn@immunoway.com)  
Support: [support.cn@immunoway.com](mailto:support.cn@immunoway.com)  
Telephone: 400-8787-807(China)  
Website: <http://www.immunoway.com.cn>  
Address: 2200 Ringwood Ave San Jose, CA 95131 USA



Please scan the QR code to access additional product information:  
**ARHGF Rabbit pAb**

For Research Use Only. Not for Use in Diagnostic Procedures.

[Antibody](#) | [ELISA Kits](#) | [Protein](#) | [Reagents](#)