

RAB21 Rabbit pAb

CatalogNo: YN1170

Key Features

Host Species

- Rabbit

Reactivity

- Human,Rat,Mouse

Applications

- WB,ELISA

MW

- 24kD (Observed)

Isotype

- IgG

Recommended Dilution Ratios

WB 1:500-2000

ELISA 1:5000-20000

Storage

Storage*

-15°C to -25°C/1 year(Do not lower than -25°C)

Formulation

Liquid in PBS containing 50% glycerol, 0.5% BSA and 0.02% sodium azide.

Basic Information

Clonality

Polyclonal

Immunogen Information

Immunogen

Synthesized peptide derived from human protein . at AA range: 60-140

Specificity

RAB21 Polyclonal Antibody detects endogenous levels of protein.

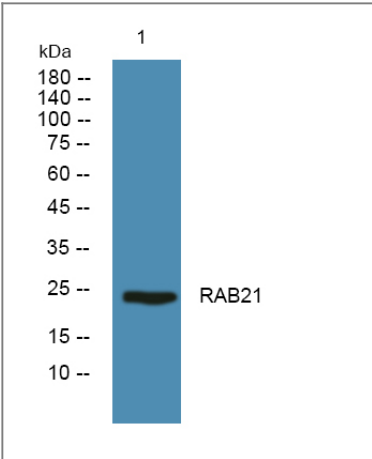
Target Information

Gene name

RAB21 KIAA0118

Protein Name	Ras-related protein Rab-21		
	Organism	Gene ID	UniProt ID
	Human	23011 ;	Q9UL25 ;
	Mouse		P35282 ;
	Rat		Q6AXT5 ;
Cellular Localization	Endoplasmic reticulum membrane ; Lipid-anchor . Golgi apparatus, trans-Golgi network . Golgi apparatus membrane . Early endosome membrane . Cytoplasmic vesicle membrane . Cleavage furrow . Cell projection, neuron projection . Colocalizes with ANKRD27 and VAMP7 in neurites (By similarity). In nonpolarized epithelial Caco-2 cells, found in the endoplasmic reticulum; in polarized cells, observed in vesicles in the apical cytoplasm (PubMed:10887961). During mitosis, in mid-telophase, localized in the ingressing cleavage furrow (PubMed:18804435). In late telophase, detected at the opposite poles of the daughter cells, in vesicles at the base of lamellipodia formed by the separating daughter cells (PubMed:18804435). .		
Tissue specificity	Widely expressed. In jejunal tissue, predominantly expressed in the apical region of the epithelial cell layer of the villi, weak expression, if any, in the crypt epithelium. Capillary endothelium and some cell types in the lamina propria also show expression.		
Function	Function:Regulates integrin internalization and recycling, but does not influence the traffic of endosomally translocated receptors in general. As a result, may regulate cell adhesion and migration (By similarity). During the mitosis of adherent cells, controls the endosomal trafficking of integrins which is required for the successful completion of cytokinesis.,similarity:Belongs to the small GTPase superfamily. Rab family.,subcellular location:In nonpolarized epithelial Caco-2 cells, found in the endoplasmic reticulum; in polarized cells, observed in vesicles in the apical cytoplasm. During mitosis, in mid-telophase, localized in the ingressing cleavage furrow. In late telophase, detected at the opposite poles of the daughter cells, in vesicles at the base of lamellipodia formed by the separating daughter cells.,subunit:Interacts with the cytoplasmic tail of integrins ITGA1, ITGA2, ITGA5, ITGA6, ITGA11 and ITGB1.,tissue specificity:Widely expressed. In jejunal tissue, predominantly expressed in the apical region of the epithelial cell layer of the villi, weak expression, if any, in the crypt epithelium. Capillary endothelium and some cell types in the lamina propria also show expression.,		

Validation Data



Western blot analysis of lysates from PC12 cells, primary antibody was diluted at 1:1000, 4°over night

| Contact information

Orders: order.cn@immunoway.com
Support: support.cn@immunoway.com
Telephone: 400-8787-807(China)
Website: <http://www.immunoway.com.cn>
Address: 2200 Ringwood Ave San Jose, CA 95131 USA



Please scan the QR code
to access additional
product information:
RAB21 Rabbit pAb

For Research Use Only. Not for Use in Diagnostic Procedures.

[Antibody](#) | [ELISA Kits](#) | [Protein](#) | [Reagents](#)