

RAB13 Rabbit pAb

CatalogNo: YN1165

Key Features

Host Species

- Rabbit

Reactivity

- Human,Rat,Mouse

Applications

- WB,ELISA

MW

- 22kD (Observed)

Isotype

- IgG

Recommended Dilution Ratios

WB 1:500-2000**ELISA 1:5000-20000**

Storage

Storage*

-15°C to -25°C/1 year(Do not lower than -25°C)

Formulation

Liquid in PBS containing 50% glycerol, 0.5% BSA and 0.02% sodium azide.

Basic Information

Clonality

Polyclonal

Immunogen Information

Immunogen

Synthesized peptide derived from human protein . at AA range: 40-120

Specificity

RAB13 Polyclonal Antibody detects endogenous levels of protein.

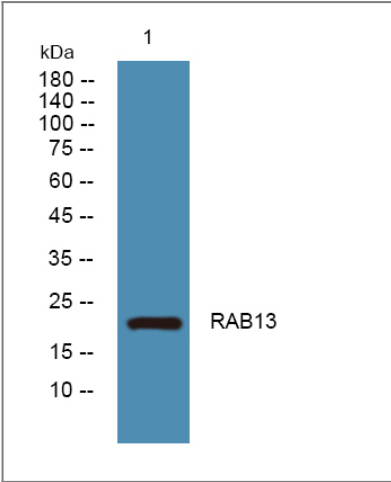
Target Information

Gene name

RAB13 GIG4

Protein Name	Ras-related protein Rab-13 (Cell growth-inhibiting gene 4 protein)		
	Organism	Gene ID	UniProt ID
	Human	5872;	P51153;
	Mouse		Q9DD03;
	Rat		P35286;
Cellular Localization	Cell membrane ; Lipid-anchor ; Cytoplasmic side . Cytoplasmic vesicle membrane ; Lipid-anchor ; Cytoplasmic side . Cell junction, tight junction . Golgi apparatus, trans-Golgi network membrane . Recycling endosome membrane . Cell projection, lamellipodium . Tight junctions or associated with vesicles scattered throughout the cytoplasm in cells lacking tight junctions (PubMed:8294494). Relocalizes to the leading edge of lamellipodia in migrating endothelial cells (By similarity). .		
Tissue specificity	Detected in several types of epithelia, including intestine, kidney, liver and in endothelial cells.		
Function	Function:Could participate in polarized transport, in the assembly and/or the activity of tight junctions.,similarity:Belongs to the small GTPase superfamily. Rab family.,subcellular location:Cytoplasmic tight junctions or associated with vesicles scattered throughout the cytoplasm in cells lacking tight junctions.,tissue specificity:Detected in several types of epithelia, including intestine, kidney, liver and in endothelial cells.,		

Validation Data



Western blot analysis of lysates from DU145 cells, primary antibody was diluted at 1:1000, 4°over night

Contact information

Orders: order.cn@immunoway.com
Support: support.cn@immunoway.com
Telephone: 400-8787-807(China)
Website: <http://www.immunoway.com.cn>
Address: 2200 Ringwood Ave San Jose, CA 95131 USA



Please scan the QR code
to access additional
product information:
RAB13 Rabbit pAb

For Research Use Only. Not for Use in Diagnostic Procedures.

[Antibody](#) | [ELISA Kits](#) | [Protein](#) | [Reagents](#)