

RRAGD Rabbit pAb

CatalogNo: YN1164

Orthogonal Validated Comparable Abs 

Key Features

Host Species

- Rabbit

Reactivity

- Human, Mouse

Applications

- WB, ELISA, CoIP

MW

- 44kD (Observed)

Isotype

- IgG

Storage

Storage*

-15°C to -25°C/1 year(Do not lower than -25°C)

Formulation

Liquid in PBS containing 50% glycerol, 0.5% BSA and 0.02% sodium azide.

Recommended Dilution Ratios

IP 1:50-200

WB 1:500-2000

ELISA 1:5000-20000

Basic Information

Clonality

Polyclonal

Immunogen Information

Immunogen

Synthesized peptide derived from human protein . at AA range: 140-220

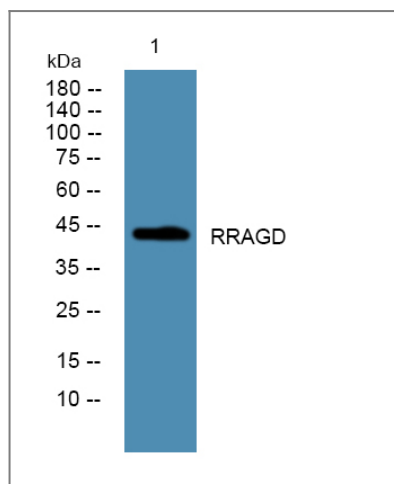
Specificity

RRAGD Polyclonal Antibody detects endogenous levels of protein.

Target Information

Gene name	RRAGD		
Protein Name	Ras-related GTP-binding protein D (Rag D) (RagD)		
	Organism	Gene ID	UniProt ID
	Human	58528;	Q9NQL2;
	Mouse		Q7TT45;
Cellular Localization	Cytoplasm . Nucleus . Lysosome . Predominantly cytoplasmic. May shuttle between the cytoplasm and nucleus, depending on the bound nucleotide state of associated RRAGA (PubMed:11073942). .		
Tissue specificity	Amygdala,Lung,		
Function	Function:Has guanine nucleotide-binding activity but lacks intrinsic GTPase activity.,similarity:Belongs to the GTR/RAG GTP-binding protein family.,subcellular location:Predominantly cytoplasmic. May shuttle between the cytoplasm and nucleus, depending on the bound nucleotide state of associated RRAGA.,subunit:Forms a heterodimer with RRAGA in a sequence-independent manner. Binds GTP. Interacts with NOL8 and RRAGB.,		

Validation Data



Western blot analysis of lysates from KB cells, primary antibody was diluted at 1:1000, 4° over night

Contact information

Orders: order.cn@immunoway.com
 Support: support.cn@immunoway.com
 Telephone: 400-8787-807(China)
 Website: <http://www.immunoway.com.cn>
 Address: 2200 Ringwood Ave San Jose, CA 95131 USA



Please scan the QR code to access additional product information:
RRAGD Rabbit pAb

