

RASF3 Rabbit pAb

CatalogNo: YN1152

Key Features

Host Species

- Rabbit

Reactivity

- Human, Mouse

Applications

- WB, ELISA

MW

- 26kD (Observed)

Isotype

- IgG

Recommended Dilution Ratios

WB 1:500-2000**ELISA 1:5000-20000**

Storage

Storage*

-15°C to -25°C/1 year (Do not lower than -25°C)

Formulation

Liquid in PBS containing 50% glycerol, and 0.02% sodium azide.

Basic Information

Clonality

Polyclonal

Immunogen Information

Immunogen

Synthesized peptide derived from human protein . at AA range: 160-240

Specificity

RASf3 Polyclonal Antibody detects endogenous levels of protein.

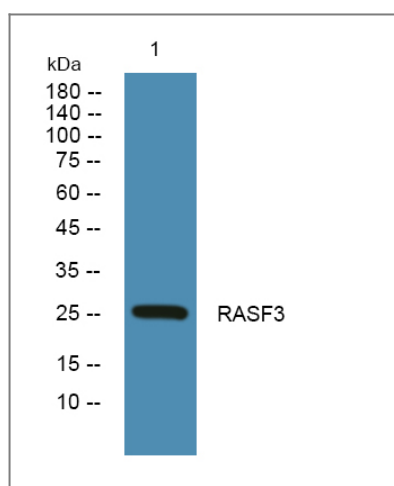
Target Information

Gene name

RASf3

Protein Name	Ras association domain-containing protein 3		
	Organism	Gene ID	UniProt ID
	Human	283349 ;	Q86WH2 ;
	Mouse		Q99P51 ;
Cellular Localization	Cytoplasm . Cytoplasm, cytoskeleton . Localized to microtubules in vascular endothelial cells.		
Tissue specificity	Widely expressed.		
Function	Caution:Has been termed RASSF5 by Ref.1.,similarity:Contains 1 Ras-associating domain.,similarity:Contains 1 SARAH domain.,subcellular location:Localized to microtubules in vascular endothelial cells.,tissue specificity:Widely expressed.,		

Validation Data



Western blot analysis of lysates from K562 cells, primary antibody was diluted at 1:1000, 4°over night

Contact information

Orders: order.cn@immunoway.com
 Support: support.cn@immunoway.com
 Telephone: 400-8787-807(China)
 Website: <http://www.immunoway.com.cn>
 Address: 2200 Ringwood Ave San Jose, CA 95131 USA



Please scan the QR code to access additional product information:
RASF3 Rabbit pAb