

S10AE Rabbit pAb

CatalogNo: YN1117

Key Features

Host Species

- Rabbit

Reactivity

- Human, Mouse

Applications

- WB, ELISA

MW

- 11kD (Observed)

Isotype

- IgG

Recommended Dilution Ratios

WB 1:500-2000**ELISA 1:5000-20000**

Storage

Storage*

-15°C to -25°C/1 year (Do not lower than -25°C)

Formulation

Liquid in PBS containing 50% glycerol, 0.5% BSA and 0.02% sodium azide.

Basic Information

Clonality

Polyclonal

Immunogen Information

Immunogen

Synthesized peptide derived from human protein . at AA range: 30-110

Specificity

S10AE Polyclonal Antibody detects endogenous levels of protein.

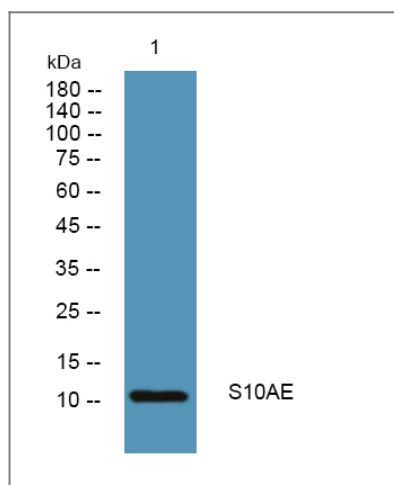
Target Information

Gene name

S100A14 S100A15

Protein Name	Protein S100-A14 (S100 calcium-binding protein A14) (S114)		
	Organism	Gene ID	UniProt ID
	Human	57402;	Q9HCY8;
	Mouse		Q9D2Q8;
Cellular Localization	Cytoplasm .		
Tissue specificity	Expressed at highest levels in colon and at moderate levels in thymus, kidney, liver, small intestine, and lung. Low expression in heart and no expression is seen in brain, skeletal muscle, spleen, placenta and peripheral blood leukocytes.		
Function	similarity:Belongs to the S-100 family.,similarity:Contains 2 EF-hand domains.,tissue specificity:Expressed at highest levels in colon and at moderate levels in thymus, kidney, liver, small intestine, and lung. Low expression in heart and no expression is seen in brain, skeletal muscle, spleen, placenta and peripheral blood leukocytes.,		

Validation Data



Western blot analysis of lysates from DU145 cells, primary antibody was diluted at 1:1000, 4°over night

Contact information

Orders: order.cn@immunoway.com
 Support: support.cn@immunoway.com
 Telephone: 400-8787-807(China)
 Website: <http://www.immunoway.com.cn>
 Address: 2200 Ringwood Ave San Jose, CA 95131 USA



Please scan the QR code to access additional product information:
S10AE Rabbit pAb

