

PIGP Rabbit pAb

CatalogNo: YN1045

Key Features

Host Species

- Rabbit

Reactivity

- Human, Mouse

Applications

- WB, ELISA

MW

- 17kD (Observed)

Isotype

- IgG

Recommended Dilution Ratios

WB 1:500-2000

ELISA 1:5000-20000

Storage

Storage*

-15°C to -25°C/1 year (Do not lower than -25°C)

Formulation

Liquid in PBS containing 50% glycerol, 0.5% BSA and 0.02% sodium azide.

Basic Information

Clonality

Polyclonal

Immunogen Information

Immunogen

Synthesized peptide derived from human protein . at AA range: 70-150

Specificity

PIGP Polyclonal Antibody detects endogenous levels of protein.

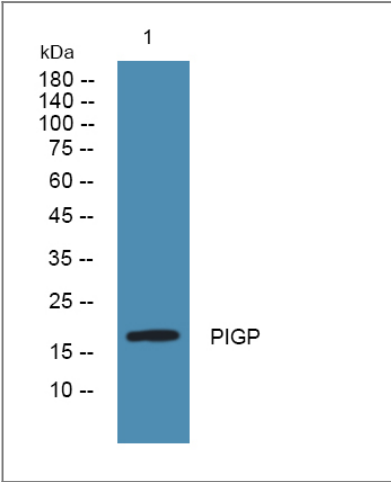
Target Information

Gene name

PIGP DCRC DSCR5 DSCRC NPD010

Protein Name	Phosphatidylinositol N-acetylglucosaminyltransferase subunit P (Down syndrome critical region protein 5) (Down syndrome critical region protein C) (Phosphatidylinositol-glycan biosynthesis class P protein) (PIG-P)		
	Organism	Gene ID	UniProt ID
	Human	51227 ;	P57054 ;
	Mouse		Q9JHG1 ;
Cellular Localization	Membrane ; Multi-pass membrane protein .		
Tissue specificity	Ubiquitous.		
Function	Catalytic activity:UDP-N-acetyl-D-glucosamine + 1-phosphatidyl-1D-myo-inositol = UDP + 6-(N-acetyl-alpha-D-glucosaminyl)-1-phosphatidyl-1D-myo-inositol.,Function:Part of the complex catalyzing the transfer of N-acetylglucosamine from UDP-N-acetylglucosamine to phosphatidylinositol, the first step of GPI biosynthesis.,pathway:Glycolipid biosynthesis; glycosylphosphatidylinositol-anchor biosynthesis.,similarity:Belongs to the PIGP family.,subunit:Associates with PIGA, PIGC, PIGH, PIGQ and DPM2. The latter is not essential for activity.,tissue specificity:Ubiquitous.,		

Validation Data



Western blot analysis of lysates from PC12 cells, primary antibody was diluted at 1:1000, 4°over night

Contact information

Orders: order.cn@immunoway.com
Support: support.cn@immunoway.com
Telephone: 400-8787-807(China)
Website: http://www.immunoway.com.cn
Address: 2200 Ringwood Ave San Jose, CA 95131 USA



Please scan the QR code to access additional product information:
PIGP Rabbit pAb

