

NDUB5 Rabbit pAb

CatalogNo: YN0927

Key Features

Host Species

- Rabbit

Reactivity

- Human, Mouse

Applications

- WB, ELISA

MW

- 20kD (Observed)

Isotype

- IgG

Recommended Dilution Ratios

WB 1:500-2000

ELISA 1:5000-20000

Storage

Storage*

-15°C to -25°C/1 year (Do not lower than -25°C)

Formulation

Liquid in PBS containing 50% glycerol, 0.5% BSA and 0.02% sodium azide.

Basic Information

Clonality

Polyclonal

Immunogen Information

Immunogen

Synthesized peptide derived from human protein . at AA range: 100-180

Specificity

NDUB5 Polyclonal Antibody detects endogenous levels of protein.

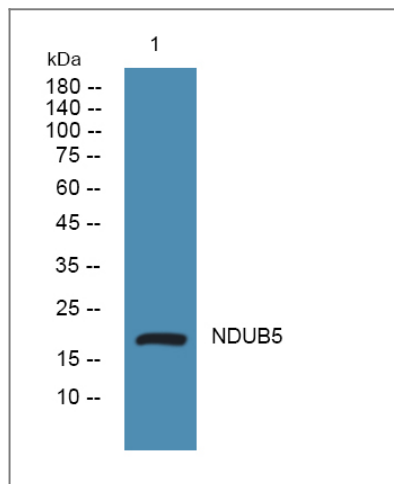
Target Information

Gene name

NDUFB5

Protein Name	NADH dehydrogenase [ubiquinone] 1 beta subcomplex subunit 5, mitochondrial (Complex I-SGDH) (CI-SGDH) (NADH-ubiquinone oxidoreductase SGD subunit)		
	Organism	Gene ID	UniProt ID
	Human	4711 ;	O43674 ;
	Mouse		Q9CQH3 ;
Cellular Localization	Mitochondrion inner membrane ; Single-pass membrane protein ; Matrix side .		
Tissue specificity	Brain,Heart,Skin and meninges pool- skin,Urinary bladder,		
Function	Function:Accessory subunit of the mitochondrial membrane respiratory chain NADH dehydrogenase (Complex I), that is believed to be not involved in catalysis. Complex I functions in the transfer of electrons from NADH to the respiratory chain. The immediate electron acceptor for the enzyme is believed to be ubiquinone.,similarity:Belongs to the complex I NDUB5 subunit family.,subunit:Complex I is composed of 45 different subunits.,		

Validation Data



Western blot analysis of lysates from DU145 cells, primary antibody was diluted at 1:1000, 4° over night

Contact information

Orders: order.cn@immunoway.com
 Support: support.cn@immunoway.com
 Telephone: 400-8787-807(China)
 Website: <http://www.immunoway.com.cn>
 Address: 2200 Ringwood Ave San Jose, CA 95131 USA



Please scan the QR code to access additional product information:
NDUB5 Rabbit pAb

