

## NDUAC Rabbit pAb

CatalogNo: YN0919

Orthogonal Validated 

### Key Features

**Host Species**

- Rabbit

**Reactivity**

- Human, Mouse

**Applications**

- WB, ELISA

**MW**

- 15kD (Observed)

**Isotype**

- IgG

### Recommended Dilution Ratios

**WB 1:500-2000****ELISA 1:5000-20000**

### Storage

**Storage\*** -15°C to -25°C/1 year (Do not lower than -25°C)**Formulation** Liquid in PBS containing 50% glycerol, 0.5% BSA and 0.02% sodium azide.

### Basic Information

**Clonality** Polyclonal

### Immunogen Information

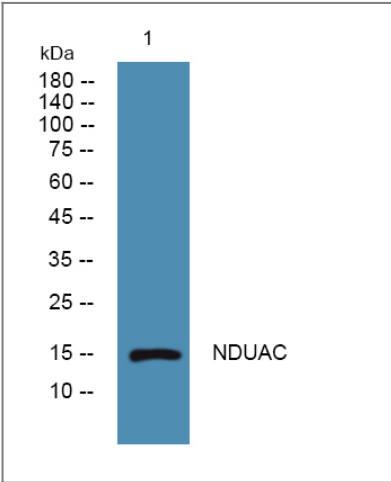
**Immunogen** Synthesized peptide derived from human protein . at AA range: 80-160**Specificity** NDUAC Polyclonal Antibody detects endogenous levels of protein.

### Target Information

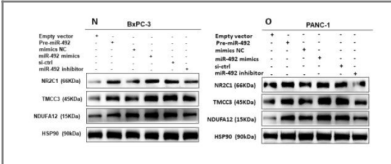
**Gene name** NDUFA12 DAP13

<b>Protein Name</b>	NADH dehydrogenase [ubiquinone] 1 alpha subcomplex subunit 12 (13 kDa differentiation-associated protein) (Complex I-B17.2) (CI-B17.2) (CIB17.2) (NADH-ubiquinone oxidoreductase subunit B17.2)		
	<b>Organism</b>	<b>Gene ID</b>	<b>UniProt ID</b>
	Human	<a href="#">55967;</a>	<a href="#">Q9UI09;</a>
	Mouse		<a href="#">Q7TMF3;</a>
<b>Cellular Localization</b>	Mitochondrion inner membrane ; Peripheral membrane protein ; Matrix side .		
<b>Tissue specificity</b>	Adrenal gland,Coronary artery,Kidney,Lung adenocarcinoma,		
<b>Function</b>	Function:Accessory subunit of the mitochondrial membrane respiratory chain NADH dehydrogenase (Complex I), that is believed to be not involved in catalysis. Complex I functions in the transfer of electrons from NADH to the respiratory chain. The immediate electron acceptor for the enzyme is believed to be ubiquinone.,similarity:Belongs to the complex I NDUFA12 subunit family.,subunit:Complex I is composed of 45 different subunits.,		

Validation Data



Western blot analysis of lysates from SH-SY5Y cells, primary antibody was diluted at 1:1000, 4°over night



NamiRNA-enhancer network of miR-492 activates the NR2C1-TGF-β/Smad3 pathway to promote epithelial-mesenchymal transition of pancreatic cancer CARCINOGENESIS Jin Wang IHC,WB Mouse,Human BxPC-3 cell-Xenograft PANC-1 cells,BxPC-3 cells

Contact information

Orders: order.cn@immunoway.com  
Support: support.cn@immunoway.com  
Telephone: 400-8787-807(China)  
Website: <http://www.immunoway.com.cn>  
Address: 2200 Ringwood Ave San Jose, CA 95131 USA



Please scan the QR code  
to access additional  
product information:  
**NDUAC Rabbit pAb**

---

For Research Use Only. Not for Use in Diagnostic Procedures.

[Antibody](#) | [ELISA Kits](#) | [Protein](#) | [Reagents](#)