

MYO5C Rabbit pAb

CatalogNo: YN0908

Key Features

Host Species

- Rabbit

Reactivity

- Human

Applications

- WB,ELISA

MW

- 191kD (Observed)

Isotype

- IgG

Recommended Dilution Ratios

WB 1:500-2000

ELISA 1:5000-20000

Storage

Storage*

-15°C to -25°C/1 year(Do not lower than -25°C)

Formulation

Liquid in PBS containing 50% glycerol, 0.5% BSA and 0.02% sodium azide.

Basic Information

Clonality

Polyclonal

Immunogen Information

Immunogen

Synthesized peptide derived from human protein . at AA range: 850-930

Specificity

MYO5C Polyclonal Antibody detects endogenous levels of protein.

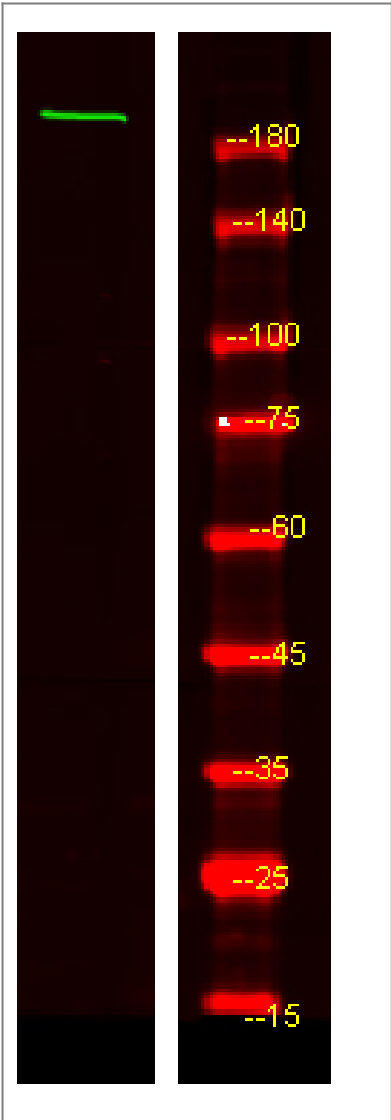
Target Information

Gene name

MYO5C

Protein Name	Unconventional myosin-Vc		
	Organism	Gene ID	UniProt ID
	Human	55930 ;	Q9NQX4 ;
Cellular Localization	myosin complex,extracellular exosome,		
Tissue specificity	Expressed chiefly in non-neuronal tissues. Particularly abundant in epithelial and glandular tissues including pancreas, prostate, mammary, stomach, colon and lung.		
Function	Function:May be involved in transferrin trafficking. Likely to power actin-based membrane trafficking in many physiologically crucial tissues.,similarity:Contains 1 dilute domain.,similarity:Contains 1 myosin head-like domain.,similarity:Contains 6 IQ domains.,tissue specificity:Expressed chiefly in non-neuronal tissues. Particularly abundant in epithelial and glandular tissues including pancreas, prostate, mammary, stomach, colon and lung.,		

| Validation Data



Western Blot analysis of HEK293 lysis, using primary antibody at 1:1000 dilution. Secondary antibody(catalog#:RS23920) was diluted at 1:10000

| Contact information

Orders: order.cn@immunoway.com
Support: support.cn@immunoway.com
Telephone: 400-8787-807(China)
Website: <http://www.immunoway.com.cn>
Address: 2200 Ringwood Ave San Jose, CA 95131 USA



Please scan the QR code
to access additional
product information:
MYO5C Rabbit pAb

For Research Use Only. Not for Use in Diagnostic Procedures.

[Antibody](#) | [ELISA Kits](#) | [Protein](#) | [Reagents](#)