

MDFIC Rabbit pAb

CatalogNo: YN0896

Key Features

Host Species

- Rabbit

Reactivity

- Human, Mouse

Applications

- WB, ELISA

MW

- 27kD (Observed)

Isotype

- IgG

Recommended Dilution Ratios

WB 1:500-2000**ELISA 1:5000-20000**

Storage

Storage*

-15°C to -25°C/1 year(Do not lower than -25°C)

Formulation

Liquid in PBS containing 50% glycerol, and 0.02% sodium azide.

Basic Information

Clonality

Polyclonal

Immunogen Information

Immunogen

Synthesized peptide derived from human protein . at AA range: 100-180

Specificity

MDFIC Polyclonal Antibody detects endogenous levels of protein.

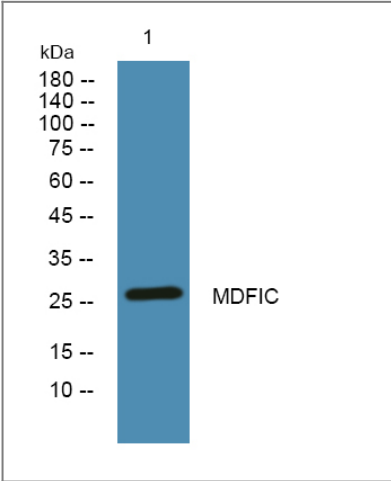
Target Information

Gene name

MDFIC

Protein Name	MyoD family inhibitor domain-containing protein (I-mfa domain-containing protein) (hIC)		
	Organism	Gene ID	UniProt ID
	Human	29969;	Q9P1T7;
	Mouse		Q8BX65;
Cellular Localization	[Isoform 1]: Nucleus, nucleolus. Also shows a granular distribution in the cytoplasm.; [Isoform 2]: Cytoplasm . Weak expression in the nucleus.		
Tissue specificity	Expressed in lymphoid organs (spleen, thymus, peripheral blood leukocytes) as well as prostate, uterus and small intestine.		
Function	Domain:The cysteine-rich C-terminus is involved in its granular distribution in the cytoplasm.,Function:Modulates the expression from both cellular and viral promoters. Down-regulates Tat-dependent transcription of the human immunodeficiency virus type 1 (HIV-1) LTR by interacting with HIV-1 Tat and Rev and impairing their nuclear import, probably by rendering the NLS domains inaccessible to importin-beta. Also stimulates activation of human T-cell leukemia virus type I (HTLV-I) LTR. Binds to the axin complex, resulting in an increase in the level of free beta-catenin. Affects axin regulation of the WNT and JNK signaling pathways.,similarity:Belongs to the MDFI family.,subcellular location:Isoform 1 localizes to the nucleolus and also shows a granular distribution in the cytoplasm. Isoform 2 is predominantly distributed throughout the cytoplasm, with only weak expression in the nucleus.,subunit:The C-terminus interacts with HIV-1 Tat and Rev, AXIN1, the histidine-rich region of CCNT1/CYCLIN T and weakly with LEF1.,tissue specificity:Expressed in lymphoid organs (spleen, thymus, peripheral blood leukocytes) as well as prostate, uterus and small intestine.,		

| Validation Data



Western blot analysis of lysates from DU145 cells, primary antibody was diluted at 1:1000, 4°over night

| Contact information

Orders: order.cn@immunoway.com
Support: support.cn@immunoway.com
Telephone: 400-8787-807(China)
Website: <http://www.immunoway.com.cn>
Address: 2200 Ringwood Ave San Jose, CA 95131 USA



Please scan the QR code
to access additional
product information:
MDFIC Rabbit pAb

For Research Use Only. Not for Use in Diagnostic Procedures.

[Antibody](#) | [ELISA Kits](#) | [Protein](#) | [Reagents](#)