

## RT10 Rabbit pAb

CatalogNo: YN0858

### Key Features

**Host Species**

- Rabbit

**Reactivity**

- Human, Mouse, Rat

**Applications**

- WB, ELISA

**MW**

- 22kD (Observed)

**Isotype**

- IgG

### Recommended Dilution Ratios

**WB 1:500-2000****ELISA 1:5000-20000**

### Storage

**Storage\***

-15°C to -25°C/1 year (Do not lower than -25°C)

**Formulation**

Liquid in PBS containing 50% glycerol, 0.5% BSA and 0.02% sodium azide.

### Basic Information

**Clonality**

Polyclonal

### Immunogen Information

**Immunogen**

Synthesized peptide derived from human protein . at AA range: 120-200

**Specificity**

RT10 Polyclonal Antibody detects endogenous levels of protein.

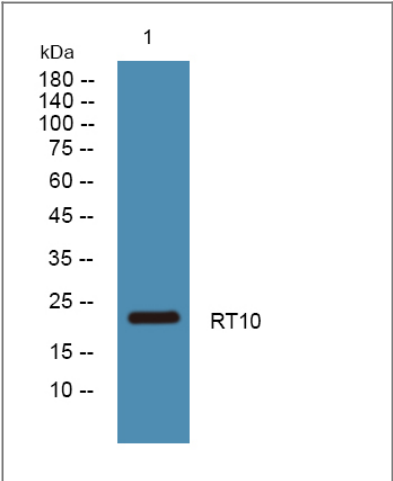
### Target Information

**Gene name**

MRPS10 MSTP040

<b>Protein Name</b>	28S ribosomal protein S10, mitochondrial (MRP-S10) (S10mt)		
	<b>Organism</b>	<b>Gene ID</b>	<b>UniProt ID</b>
	Human	<a href="#">55173;</a>	<a href="#">P82664;</a>
	Mouse		<a href="#">Q80ZK0;</a>
	Rat		<a href="#">Q7TQ82;</a>
<b>Cellular Localization</b>	Mitochondrion .		
<b>Tissue specificity</b>	Brain,Heart,		
<b>Function</b>	similarity:Belongs to the ribosomal protein S10P family.,		

## Validation Data



Western blot analysis of lysates from A431 cells, primary antibody was diluted at 1:1000, 4°over night

## Contact information

Orders: [order.cn@immunoway.com](mailto:order.cn@immunoway.com)  
 Support: [support.cn@immunoway.com](mailto:support.cn@immunoway.com)  
 Telephone: 400-8787-807(China)  
 Website: <http://www.immunoway.com.cn>  
 Address: 2200 Ringwood Ave San Jose, CA 95131 USA



Please scan the QR code  
 to access additional  
 product information:  
**RT10 Rabbit pAb**