

## MED28 Rabbit pAb

CatalogNo: YN0843

### Key Features

#### Host Species

- Rabbit

#### Reactivity

- Human, Mouse, Rat

#### Applications

- WB, ELISA

#### MW

- 19kD (Observed)

#### Isotype

- IgG

### Recommended Dilution Ratios

WB 1:500-2000

ELISA 1:5000-20000

### Storage

#### Storage\*

-15°C to -25°C/1 year (Do not lower than -25°C)

#### Formulation

Liquid in PBS containing 50% glycerol, 0.5% BSA and 0.02% sodium azide.

### Basic Information

#### Clonality

Polyclonal

### Immunogen Information

#### Immunogen

Synthesized peptide derived from human protein . at AA range: 20-100

#### Specificity

MED28 Polyclonal Antibody detects endogenous levels of protein.

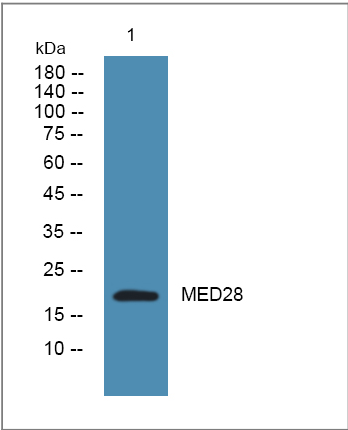
### Target Information

#### Gene name

MED28 EG1 FKSG20

<b>Protein Name</b>	Mediator of RNA polymerase II transcription subunit 28 (Endothelial-derived protein 1) (Mediator complex subunit 28) (Merlin and Grb2-interacting cytoskeletal protein) (Magainin) (Tumor angiogenesis marker EG-1)		
	<b>Organism</b>	<b>Gene ID</b>	<b>UniProt ID</b>
	Human	<a href="#">80306</a> ;	<a href="#">Q9H204</a> ;
	Mouse		<a href="#">Q920D3</a> ;
	Rat		<a href="#">P68943</a> ;
<b>Cellular Localization</b>	Nucleus . Cytoplasm . Membrane ; Peripheral membrane protein . According to PubMed:15467741, it is cytoplasmic and mainly membrane-associated.		
<b>Tissue specificity</b>	Widely expressed. Highly expressed in vascular tissues such as placenta, testis and liver.		
<b>Function</b>	<p>Function:Component of the Mediator complex, a coactivator involved in the regulated transcription of nearly all RNA polymerase II-dependent genes. Mediator functions as a bridge to convey information from gene-specific regulatory proteins to the basal RNA polymerase II transcription machinery. Mediator is recruited to promoters by direct interactions with regulatory proteins and serves as a scaffold for the assembly of a functional preinitiation complex with RNA polymerase II and the general transcription factors. May be part of a complex containing NF2/merlin that participates in cellular signaling to the actin cytoskeleton downstream of tyrosine kinase signaling pathways.,induction:Up-regulated by endothelial cells when exposed to tumor conditional media.,similarity:Belongs to the Mediator complex subunit 28 family.,subcellular location:According to PubMed:15467741, it is cytoplasmic and mainly membrane-associated.,subunit:Component of the Mediator complex, which is composed of MED1, MED4, MED6, MED7, MED8, MED9, MED10, MED11, MED12, MED13, MED13L, MED14, MED15, MED16, MED17, MED18, MED19, MED20, MED21, MED22, MED23, MED24, MED25, MED26, MED27, MED29, MED30, MED31, CCNC, CDK8 and CDC2L6/CDK11. The MED12, MED13, CCNC and CDK8 subunits form a distinct module termed the CDK8 module. Mediator containing the CDK8 module is less active than Mediator lacking this module in supporting transcriptional activation. Individual preparations of the Mediator complex lacking one or more distinct subunits have been variously termed ARC, CRSP, DRIP, PC2, SMCC and TRAP. Forms a ternary complex with NF2/merlin and GRB2. Binds to actin.,tissue specificity:Widely expressed. Highly expressed in vascular tissues such as placenta, testis and liver.,</p>		

Validation Data



Western blot analysis of lysates from K562 cells, primary antibody was diluted at 1:1000, 4°over night

## | Contact information

Orders: order.cn@immunoway.com  
Support: support.cn@immunoway.com  
Telephone: 400-8787-807(China)  
Website: <http://www.immunoway.com.cn>  
Address: 2200 Ringwood Ave San Jose, CA 95131 USA



Please scan the QR code  
to access additional  
product information:  
**MED28 Rabbit pAb**

---

For Research Use Only. Not for Use in Diagnostic Procedures.

[Antibody](#) | [ELISA Kits](#) | [Protein](#) | [Reagents](#)