

LDHC Rabbit pAb

CatalogNo: YN0826

Key Features

Host Species

- Rabbit

Reactivity

- Human, Mouse, Rat

Applications

- WB, ELISA

MW

- 36kD (Observed)

Isotype

- IgG

Storage

Storage* -15°C to -25°C/1 year (Do not lower than -25°C)**Formulation** Liquid in PBS containing 50% glycerol, 0.5% BSA and 0.02% sodium azide.

Recommended Dilution Ratios

WB 1:500-2000**ELISA 1:5000-20000**

Basic Information

Clonality Polyclonal

Immunogen Information

Immunogen Synthesized peptide derived from human protein . at AA range: 170-250**Specificity** LDHC Polyclonal Antibody detects endogenous levels of protein.

Target Information

Gene name LDHC LDH3 LDHX

Protein Name L-lactate dehydrogenase C chain (LDH-C) (Cancer/testis antigen 32) (CT32) (LDH testis subunit) (LDH-X)

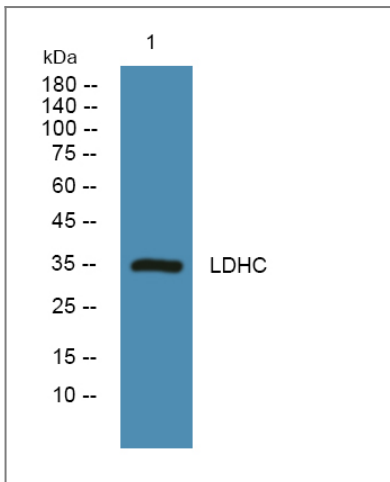
Organism	Gene ID	UniProt ID
Human	3948;	P07864;
Mouse		P00342;
Rat		P19629;

Cellular Localization Cytoplasm.

Tissue specificity Brain,Testis,

Function Catalytic activity:(S)-lactate + NAD(+) = pyruvate + NADH.,Function:Possible role in sperm motility.,online information:Lactate dehydrogenase entry,pathway:Fermentation; pyruvate fermentation to lactate; (S)-lactate from pyruvate: step 1/1.,similarity:Belongs to the LDH/MDH superfamily. LDH family.,subunit:Homotetramer.,

Validation Data



Western blot analysis of lysates from PC12 cells, primary antibody was diluted at 1:1000, 4° over night

Contact information

Orders: order.cn@immunoway.com
Support: support.cn@immunoway.com
Telephone: 400-8787-807(China)
Website: <http://www.immunoway.com.cn>
Address: 2200 Ringwood Ave San Jose, CA 95131 USA



Please scan the QR code to access additional product information:
LDHC Rabbit pAb

