

DBX1 Rabbit pAb

CatalogNo: YN0770

Key Features

Host Species

- Rabbit

Reactivity

- Human,Rat,Mouse

Applications

- WB,ELISA

MW

- 37kD (Observed)

Isotype

- IgG

Recommended Dilution Ratios

WB 1:500-2000**ELISA 1:5000-20000**

Storage

Storage*

-15°C to -25°C/1 year(Do not lower than -25°C)

Formulation

Liquid in PBS containing 50% glycerol, 0.5% BSA and 0.02% sodium azide.

Basic Information

Clonality

Polyclonal

Immunogen Information

Immunogen

Synthesized peptide derived from part region of human protein

Specificity

DBX1 Polyclonal Antibody detects endogenous levels of protein.

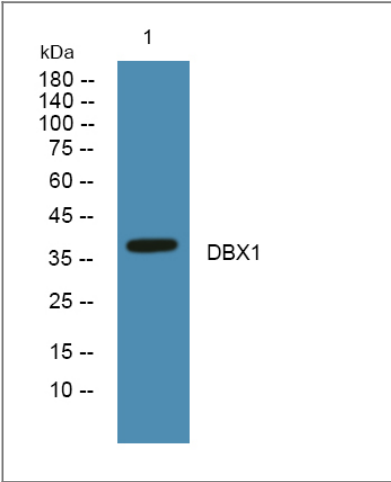
Target Information

Gene name

DBX1

Protein Name	Homeobox protein DBX1 (Developing brain homeobox protein 1)		
	Organism	Gene ID	UniProt ID
	Human	120237;	A6NMT0;
	Mouse		P52950;
Cellular Localization	Rat		Q5NSW5;
	Nucleus .		

Validation Data



Western blot analysis of lysates from K562 cells, primary antibody was diluted at 1:1000, 4°over night

Contact information

Orders: order.cn@immunoway.com
Support: support.cn@immunoway.com
Telephone: 400-8787-807(China)
Website: http://www.immunoway.com.cn
Address: 2200 Ringwood Ave San Jose, CA 95131 USA



Please scan the QR code to access additional product information:
DBX1 Rabbit pAb