

## MSS4 Rabbit pAb

CatalogNo: YN0751

### Key Features

#### Host Species

- Rabbit

#### Reactivity

- Human, Mouse, Rat

#### Applications

- WB, ELISA

#### MW

- 13kD (Observed)

#### Isotype

- IgG

### Recommended Dilution Ratios

**WB 1:500-2000**

**ELISA 1:5000-20000**

### Storage

#### Storage\*

-15°C to -25°C/1 year (Do not lower than -25°C)

#### Formulation

Liquid in PBS containing 50% glycerol, 0.5% BSA and 0.02% sodium azide.

### Basic Information

#### Clonality

Polyclonal

### Immunogen Information

#### Immunogen

Synthesized peptide derived from part region of human protein

#### Specificity

MSS4 Polyclonal Antibody detects endogenous levels of protein.

### Target Information

#### Gene name

RABIF MSS4 RASGRF3

**Protein Name** Guanine nucleotide exchange factor MSS4 (Rab-interacting factor)

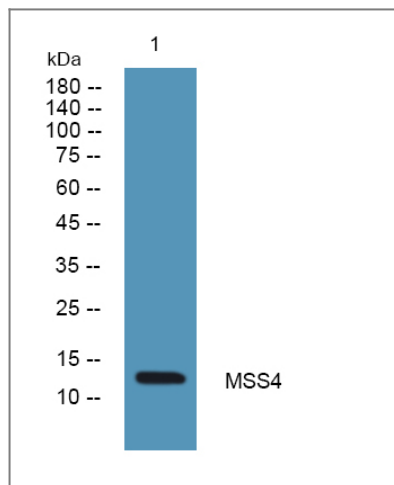
Organism	Gene ID	UniProt ID
Human	<a href="#">5877;</a>	<a href="#">P47224;</a>
Mouse		<a href="#">Q91X96;</a>
Rat		<a href="#">Q08326;</a>

**Cellular Localization** intracellular,cytosol,membrane,

**Tissue specificity** Ubiquitous.

**Function** Function:Guanine-nucleotide-releasing protein that acts on members of the SCE4/YPT1/RAB subfamily. Stimulates GDP release from both YPT1 and RAB3A, but is less active on these proteins than on the SEC4 protein. Might play a general role in vesicular transport.,similarity:Belongs to the DSS4/MSS4 family.,tissue specificity:Ubiquitous.,

## Validation Data



Western blot analysis of lysates from PC12 cells, primary antibody was diluted at 1:1000, 4°over night

## Contact information

Orders: order.cn@immunoway.com  
Support: support.cn@immunoway.com  
Telephone: 400-8787-807(China)  
Website: <http://www.immunoway.com.cn>  
Address: 2200 Ringwood Ave San Jose, CA 95131 USA



Please scan the QR code to access additional product information:  
**MSS4 Rabbit pAb**

