

## GEM Rabbit pAb

CatalogNo: YN0745

### Key Features

#### Host Species

- Rabbit

#### Reactivity

- Human, Mouse

#### Applications

- WB, ELISA

#### MW

- 32kD (Observed)

#### Isotype

- IgG

### Storage

**Storage\*** -15°C to -25°C/1 year (Do not lower than -25°C)

**Formulation** Liquid in PBS containing 50% glycerol, 0.5% BSA and 0.02% sodium azide.

### Recommended Dilution Ratios

**WB 1:500-2000**

**ELISA 1:5000-20000**

### Basic Information

**Clonality** Polyclonal

### Immunogen Information

**Immunogen** Synthesized peptide derived from part region of human protein. AA range: 79-179

**Specificity** GEM Polyclonal Antibody detects endogenous levels of protein.

### Target Information

**Gene name** GEM KIR

**Protein Name** GTP-binding protein GEM (GTP-binding mitogen-induced T-cell protein) (RAS-like protein KIR)

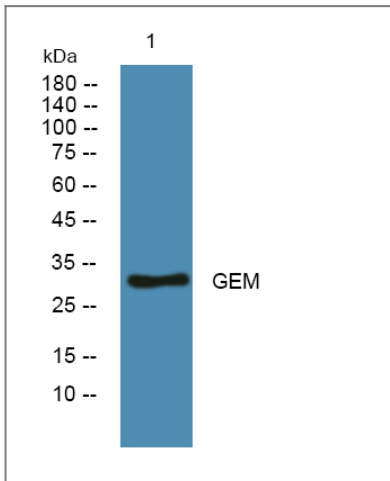
Organism	Gene ID	UniProt ID
Human	<a href="#">2669;</a>	<a href="#">P55040;</a>
Mouse		<a href="#">P55041;</a>

**Cellular Localization** Cell membrane; Peripheral membrane protein; Cytoplasmic side.

**Tissue specificity** Most abundant in thymus, spleen, kidney, lung, and testis. Less abundant in heart, brain, liver and skeletal muscle.

**Function** Function:Could be a regulatory protein, possibly participating in receptor-mediated signal transduction at the plasma membrane. Has guanine nucleotide-binding activity but undetectable intrinsic GTPase activity.,induction:By mitogens.,PTM:Phosphorylated on tyrosine residues.,similarity:Belongs to the small GTPase superfamily. RGK family.,subunit:Interacts with calmodulin in a Ca(2+)-dependent manner. Binds ROCK1.,tissue specificity:Most abundant in thymus, spleen, kidney, lung, and testis. Less abundant in heart, brain, liver and skeletal muscle.,

## Validation Data



Western blot analysis of lysates from DU145 cells, primary antibody was diluted at 1:1000, 4° over night

## Contact information

Orders: [order.cn@immunoway.com](mailto:order.cn@immunoway.com)  
Support: [support.cn@immunoway.com](mailto:support.cn@immunoway.com)  
Telephone: 400-8787-807(China)  
Website: <http://www.immunoway.com.cn>  
Address: 2200 Ringwood Ave San Jose, CA 95131 USA



Please scan the QR code to access additional product information:  
**GEM Rabbit pAb**

