

DIRA2 Rabbit pAb

CatalogNo: YN0743

Key Features

Host Species

- Rabbit

Reactivity

- Human, Mouse

Applications

- WB, ELISA

MW

- 21kD (Observed)

Isotype

- IgG

Storage

Storage* -15°C to -25°C/1 year (Do not lower than -25°C)

Formulation Liquid in PBS containing 50% glycerol, 0.5% BSA and 0.02% sodium azide.

Recommended Dilution Ratios

WB 1:500-2000

ELISA 1:5000-20000

Basic Information

Clonality Polyclonal

Immunogen Information

Immunogen Synthesized peptide derived from part region of human protein. AA range:1-59

Specificity DIRA2 Polyclonal Antibody detects endogenous levels of protein.

Target Information

Gene name DIRAS2

Protein Name GTP-binding protein Di-Ras2 (Distinct subgroup of the Ras family member 2)

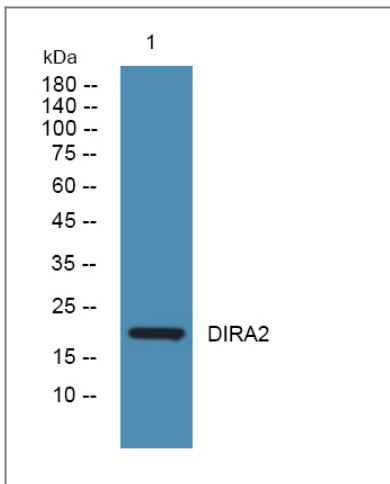
Organism	Gene ID	UniProt ID
Human	54769 ;	Q96HU8 ;
Mouse		Q5PR73 ;

Cellular Localization Cell membrane ; Lipid-anchor ; Cytoplasmic side .

Tissue specificity Highly expressed in brain.

Function Function:Displays low GTPase activity and exist predominantly in the GTP-bound form.,similarity:Belongs to the small GTPase superfamily. Di-Ras family.,tissue specificity:Highly expressed in brain.,

Validation Data



Western blot analysis of lysates from HCT116 cells, primary antibody was diluted at 1:1000, 4°over night

Contact information

Orders: order.cn@immunoway.com
Support: support.cn@immunoway.com
Telephone: 400-8787-807(China)
Website: <http://www.immunoway.com.cn>
Address: 2200 Ringwood Ave San Jose, CA 95131 USA



Please scan the QR code to access additional product information:
DIRA2 Rabbit pAb