

GIMA7 Rabbit pAb

CatalogNo: YN0739

Key Features

Host Species

- Rabbit

Reactivity

- Human

Applications

- WB, ELISA

MW

- 33kD (Observed)

Isotype

- IgG

Recommended Dilution Ratios

WB 1:500-2000**ELISA 1:5000-20000**

Storage

Storage*

-15°C to -25°C/1 year(Do not lower than -25°C)

Formulation

Liquid in PBS containing 50% glycerol, 0.5% BSA and 0.02% sodium azide.

Basic Information

Clonality

Polyclonal

Immunogen Information

Immunogen

Synthesized peptide derived from part region of human protein

Specificity

GIMA7 Polyclonal Antibody detects endogenous levels of protein.

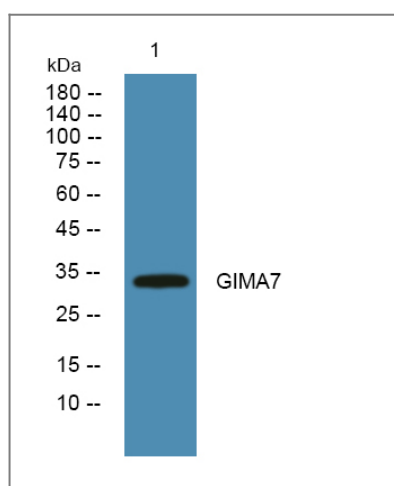
Target Information

Gene name

GIMAP7 IAN7

Protein Name	GTPase IMAP family member 7 (Immunity-associated nucleotide 7 protein) (IAN-7)		
	Organism	Gene ID	UniProt ID
	Human	168537 ;	Q8NHV1 ;
Cellular Localization	Lipid droplet . Cytoplasm . Endoplasmic reticulum . Golgi apparatus . Colocalizes with GIMAP2 on the surface of cytoplasmic lipid droplets.		
Tissue specificity	Most abundantly expressed in spleen, lymph nodes, and fetal kidney, but also present in the heart and the small intestine. Lower expression levels are found in lung, kidney, liver, and thyroid, salivary, and mammary glands. Also detected in the thymus (PubMed:15474311). Detected in T-cells (PubMed:23454188).		
Function	similarity:Belongs to the IAN GTP-binding protein family.,		

Validation Data



Western blot analysis of lysates from A431 cells, primary antibody was diluted at 1:1000, 4° over night

Contact information

Orders: order.cn@immunoway.com
 Support: support.cn@immunoway.com
 Telephone: 400-8787-807(China)
 Website: <http://www.immunoway.com.cn>
 Address: 2200 Ringwood Ave San Jose, CA 95131 USA



Please scan the QR code to access additional product information:
GIMA7 Rabbit pAb