

EF1D Rabbit pAb

CatalogNo: YN0695

Key Features

Host Species

- Rabbit

Reactivity

- Human, Mouse, Rat

Applications

- WB, ELISA

MW

- 30kD (Observed)

Isotype

- IgG

Recommended Dilution Ratios

WB 1:500-2000

ELISA 1:5000-20000

Storage

Storage*

-15°C to -25°C/1 year (Do not lower than -25°C)

Formulation

Liquid in PBS containing 50% glycerol, 0.5% BSA and 0.02% sodium azide.

Basic Information

Clonality

Polyclonal

Immunogen Information

Immunogen

Synthesized peptide derived from part region of human protein

Specificity

EF1D Polyclonal Antibody detects endogenous levels of protein.

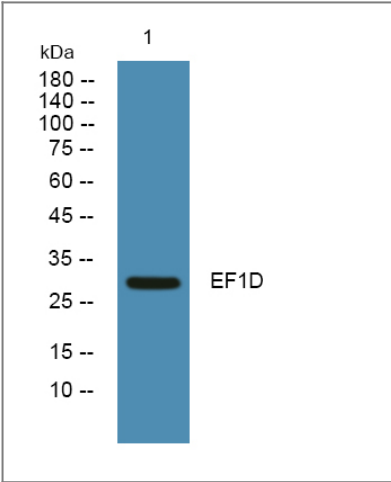
Target Information

Gene name

EEF1D EF1D

Protein Name	Elongation factor 1-delta (EF-1-delta) (Antigen NY-CO-4)		
	Organism	Gene ID	UniProt ID
	Human	1936;	P29692;
	Mouse		P57776;
	Rat		Q68FR9;
Cellular Localization	[Isoform 2]: Nucleus .		
Tissue specificity	Isoform 2 is specifically expressed in brain, cerebellum and testis.		
Function	Function:EF-1-beta and EF-1-delta stimulate the exchange of GDP bound to EF-1-alpha to GTP.,PTM:Phosphorylated upon DNA damage, probably by ATM or ATR.,similarity:Belongs to the EF-1-beta/EF-1-delta family.,subunit:EF-1 is composed of 4 subunits: alpha, beta, delta, and gamma.,		

Validation Data



Western blot analysis of lysates from SH-SY5Y cells, primary antibody was diluted at 1:1000, 4°over night

Contact information

Orders: order.cn@immunoway.com
Support: support.cn@immunoway.com
Telephone: 400-8787-807(China)
Website: http://www.immunoway.com.cn
Address: 2200 Ringwood Ave San Jose, CA 95131 USA



Please scan the QR code to access additional product information:
EF1D Rabbit pAb

