

## HECD1 Rabbit pAb

CatalogNo: YN0678

### Key Features

#### Host Species

- Rabbit

#### Reactivity

- Human, Mouse

#### Applications

- IHC, IF

#### MW

- 287kD (Observed)

#### Isotype

- IgG

### Recommended Dilution Ratios

IHC 1:50-300

IF 1:50-200

### Storage

#### Storage\*

-15°C to -25°C/1 year (Do not lower than -25°C)

#### Formulation

Liquid in PBS containing 50% glycerol, 0.5% BSA and 0.02% sodium azide.

### Basic Information

#### Clonality

Polyclonal

### Immunogen Information

#### Immunogen

Synthesized peptide derived from part region of human protein

#### Specificity

HECD1 Polyclonal Antibody detects endogenous levels of protein.

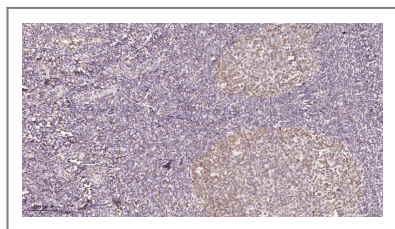
### Target Information

#### Gene name

HECTD1 KIAA1131

<b>Protein Name</b>	E3 ubiquitin-protein ligase HECTD1 (E3 ligase for inhibin receptor) (EULIR) (HECT domain-containing protein 1)		
	<b>Organism</b>	<b>Gene ID</b>	<b>UniProt ID</b>
	Human	<a href="#">25831</a> ;	<a href="#">Q9ULT8</a> ;
	Mouse		<a href="#">Q69ZR2</a> ;
<b>Cellular Localization</b>	nucleus,cytoplasm,		
<b>Tissue specificity</b>	Bone,Brain,Muscle,Ovary,Testis,Urinary bladder,		
<b>Function</b>	Function:Probable E3 ubiquitin-protein ligase which accepts ubiquitin from an E2 ubiquitin-conjugating enzyme in the form of a thioester and then directly transfers the ubiquitin to targeted substrates.,pathway:Protein modification; protein ubiquitination.,similarity:Belongs to the UPL family. K-HECT subfamily.,similarity:Contains 1 HECT (E6AP-type E3 ubiquitin-protein ligase) domain.,similarity:Contains 1 MIB/HERC2 domain.,similarity:Contains 4 ANK repeats.,		

## Validation Data



Immunohistochemical analysis of paraffin-embedded human tonsil. 1, Tris-EDTA,pH9.0 was used for antigen retrieval. 2 Antibody was diluted at 1:200(4° overnight.3,Secondary antibody was diluted at 1:200(room temperature, 45min).

## Contact information

Orders: [order.cn@immunoway.com](mailto:order.cn@immunoway.com)  
 Support: [support.cn@immunoway.com](mailto:support.cn@immunoway.com)  
 Telephone: 400-8787-807(China)  
 Website: <http://www.immunoway.com.cn>  
 Address: 2200 Ringwood Ave San Jose, CA 95131 USA



Please scan the QR code to access additional product information:  
**HECD1 Rabbit pAb**

For Research Use Only. Not for Use in Diagnostic Procedures.

[Antibody](#) | [ELISA Kits](#) | [Protein](#) | [Reagents](#)