

RPB7 Rabbit pAb

CatalogNo: YN0660

Key Features

Host Species

- Rabbit

Reactivity

- Human, Mouse, Rat

Applications

- WB, ELISA

MW

- 18kD (Observed)

Isotype

- IgG

Storage

Storage* -15°C to -25°C/1 year (Do not lower than -25°C)

Formulation Liquid in PBS containing 50% glycerol, 0.5% BSA and 0.02% sodium azide.

Recommended Dilution Ratios

WB 1:500-2000

ELISA 1:5000-20000

Basic Information

Clonality Polyclonal

Immunogen Information

Immunogen Synthesized peptide derived from part region of human protein. AA range:19-69

Specificity RPB7 Polyclonal Antibody detects endogenous levels of protein.

Target Information

Gene name POLR2G RPB7

Protein Name DNA-directed RNA polymerase II subunit RPB7 (RNA polymerase II subunit B7) (DNA-directed RNA polymerase II subunit G) (RNA polymerase II 19 kDa subunit) (RPB19)

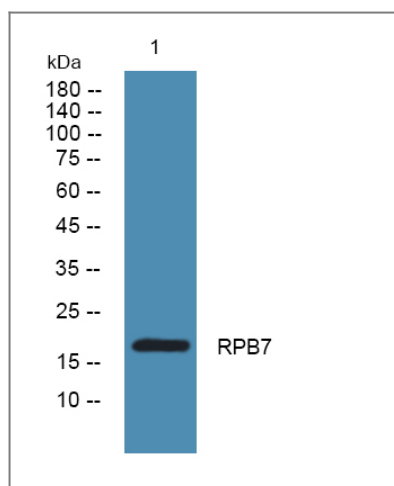
Organism	Gene ID	UniProt ID
Human	5436;	P62487;
Mouse		P62488;
Rat		P62489;

Cellular Localization Nucleus .

Tissue specificity Brain ,

Function Function:DNA-dependent RNA polymerase catalyzes the transcription of DNA into RNA using the four ribonucleoside triphosphates as substrates. Component of RNA polymerase II which synthesizes mRNA precursors and many functional non-coding RNAs. Pol II is the central component of the basal RNA polymerase II transcription machinery. It is composed of mobile elements that move relative to each other. RPB7 is part of a subcomplex with RPB4 that binds to a pocket formed by RPB1 , RPB2 and RPB6 at the base of the clamp element. The RPB4-RPB7 subcomplex seems to lock the clamp via RPB7 in the closed conformation thus preventing double stranded DNA to enter the active site cleft. The RPB4-RPB7 subcomplex binds single-stranded DNA and RNA (By similarity) . Binds RNA. ,similarity:Belongs to the eukaryotic RPB7/RPC8 RNA polymerase subunit family. ,subunit:Component of the RNA polymerase II (Pol II) complex consisting of 12 subunits (By similarity) . RPB4 and RPB7 form a subcomplex that protrudes from the 10-subunit Pol II core complex. ,

Validation Data



Western blot analysis of lysates from KB cells, primary antibody was diluted at 1:1000, 4°C over night

Contact information

Orders: order.cn@immunoway.com
Support: support.cn@immunoway.com
Telephone: 400-8787-807(China)
Website: <http://www.immunoway.com.cn>
Address: 2200 Ringwood Ave San Jose, CA 95131 USA



Please scan the QR code
to access additional
product information:
RPB7 Rabbit pAb

For Research Use Only. Not for Use in Diagnostic Procedures.

[Antibody](#) | [ELISA Kits](#) | [Protein](#) | [Reagents](#)