

## RPB4 Rabbit pAb

CatalogNo: YN0659

### Key Features

**Host Species**

- Rabbit

**Reactivity**

- Human, Mouse

**Applications**

- WB, ELISA

**MW**

- 15kD (Observed)

**Isotype**

- IgG

### Recommended Dilution Ratios

**WB 1:500-2000****ELISA 1:5000-20000**

### Storage

**Storage\***

-15°C to -25°C/1 year (Do not lower than -25°C)

**Formulation**

Liquid in PBS containing 50% glycerol, 0.5% BSA and 0.02% sodium azide.

### Basic Information

**Clonality**

Polyclonal

### Immunogen Information

**Immunogen**

Synthesized peptide derived from part region of human protein

**Specificity**

RPB4 Polyclonal Antibody detects endogenous levels of protein.

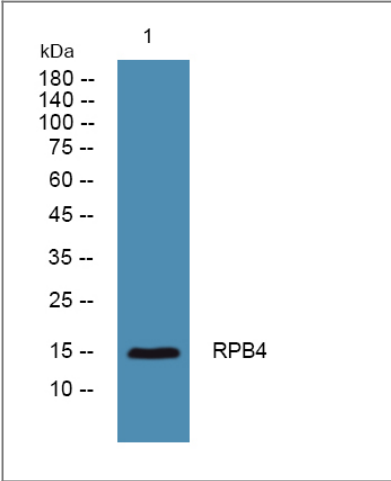
### Target Information

**Gene name**

POLR2D

<b>Protein Name</b>	DNA-directed RNA polymerase II subunit RPB4 (RNA polymerase II subunit B4) (DNA-directed RNA polymerase II subunit D) (RNA polymerase II 16 kDa subunit) (RPB16)		
	<b>Organism</b>	<b>Gene ID</b>	<b>UniProt ID</b>
	Human	<a href="#">5433</a> ;	<a href="#">O15514</a> ;
	Mouse		<a href="#">Q9D7M8</a> ;
<b>Cellular Localization</b>	Nucleus .		
<b>Tissue specificity</b>	Cervix carcinoma,Lung,Lymph,Skin,		
<b>Function</b>	<p>Function:DNA-dependent RNA polymerase catalyzes the transcription of DNA into RNA using the four ribonucleoside triphosphates as substrates. Component of RNA polymerase II which synthesizes mRNA precursors and many functional non-coding RNAs. Pol II is the central component of the basal RNA polymerase II transcription machinery. It is composed of mobile elements that move relative to each other. RPB4 is part of a subcomplex with RPB7 that binds to a pocket formed by RPB1, RPB2 and RPB6 at the base of the clamp element. The RBP4-RPB7 subcomplex seems to lock the clamp via RPB7 in the closed conformation thus preventing double stranded DNA to enter the active site cleft. The RPB4-RPB7 subcomplex binds single-stranded DNA and RNA.,similarity:Belongs to the eukaryotic RPB4 RNA polymerase subunit family.,subunit:Component of the RNA polymerase II (Pol II) complex consisting of 12 subunits. RPB4 and RPB7 form a subcomplex that protrudes from the 10-subunit Pol II core complex.,</p>		

| Validation Data



Western blot analysis of lysates from Jurkat cells, primary antibody was diluted at 1:1000, 4°over night

| Contact information

Orders: order.cn@immunoway.com  
Support: support.cn@immunoway.com  
Telephone: 400-8787-807(China)  
Website: <http://www.immunoway.com.cn>  
Address: 2200 Ringwood Ave San Jose, CA 95131 USA



Please scan the QR code  
to access additional  
product information:  
**RPB4 Rabbit pAb**

---

For Research Use Only. Not for Use in Diagnostic Procedures.

[Antibody](#) | [ELISA Kits](#) | [Protein](#) | [Reagents](#)