

## CSN7A Rabbit pAb

CatalogNo: YN0621

### Key Features

#### Host Species

- Rabbit

#### Reactivity

- Human, Mouse

#### Applications

- WB, ELISA

#### MW

- 30kD (Observed)

#### Isotype

- IgG

### Recommended Dilution Ratios

WB 1:500-2000

ELISA 1:5000-20000

### Storage

#### Storage\*

-15°C to -25°C/1 year (Do not lower than -25°C)

#### Formulation

Liquid in PBS containing 50% glycerol, 0.5% BSA and 0.02% sodium azide.

### Basic Information

#### Clonality

Polyclonal

### Immunogen Information

#### Immunogen

Synthesized peptide derived from part region of human protein

#### Specificity

CSN7A Polyclonal Antibody detects endogenous levels of protein.

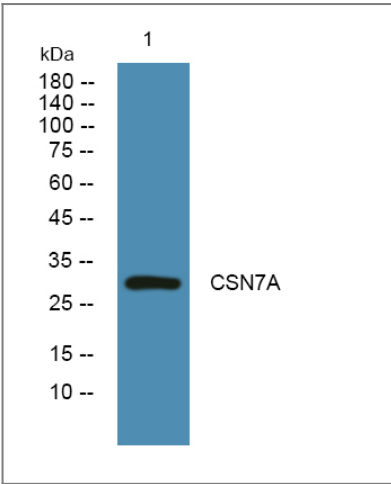
### Target Information

#### Gene name

COPS7A CSN7A DERP10

<b>Protein Name</b>	COP9 signalosome complex subunit 7a (SGN7a) (Signalosome subunit 7a) (Dermal papilla-derived protein 10) (JAB1-containing signalosome subunit 7a)		
	<b>Organism</b>	<b>Gene ID</b>	<b>UniProt ID</b>
	Human	<a href="#">50813</a> ;	<a href="#">Q9UBW8</a> ;
	Mouse		<a href="#">Q9CZ04</a> ;
<b>Cellular Localization</b>	Cytoplasm . Nucleus .		
<b>Tissue specificity</b>	Widely expressed. Expressed at high level in brain, heart and skeletal muscle.		
<b>Function</b>	<p>Function:Component of the COP9 signalosome complex (CSN), a complex involved in various cellular and developmental processes. The CSN complex is an essential regulator of the ubiquitin (Ubl) conjugation pathway by mediating the deneddylation of the cullin subunits of SCF-type E3 ligase complexes, leading to decrease the Ubl ligase activity of SCF-type complexes such as SCF, CSA or DDB2. The complex is also involved in phosphorylation of p53/TP53, c-jun/JUN, IkappaBalpha/NFKBIA, ITPK1 and IRF8/ICSBP, possibly via its association with CK2 and PKD kinases. CSN-dependent phosphorylation of TP53 and JUN promotes and protects degradation by the Ubl system, respectively.,PTM:Phosphorylated by CK2 and PKD kinases. Phosphorylated upon DNA damage, probably by ATM or ATR.,similarity:Belongs to the CSN7/EIF3M family. CSN7 subfamily.,similarity:Contains 1 PCI domain.,subunit:Component of the CSN complex, composed of COPS1/GPS1, COPS2, COPS3, COPS4, COPS5, COP6, COPS7 (COPS7A or COPS7B) and COPS8. In the complex, it probably interacts directly with COPS1, COPS2, COPS4, COPS5, COPS6 and COPS8. Interacts with PMF1. Interacts with the translation initiation factor EIF3S6. Interacts with CK2 and PKD. Interacts directly with ID3.,tissue specificity:Widely expressed. Expressed at high level in brain, heart and skeletal muscle.,</p>		

| Validation Data



Western blot analysis of lysates from DU145 cells, primary antibody was diluted at 1:1000, 4°over night

| Contact information

Orders: order.cn@immunoway.com  
Support: support.cn@immunoway.com  
Telephone: 400-8787-807(China)  
Website: <http://www.immunoway.com.cn>  
Address: 2200 Ringwood Ave San Jose, CA 95131 USA



Please scan the QR code  
to access additional  
product information:  
**CSN7A Rabbit pAb**

---

For Research Use Only. Not for Use in Diagnostic Procedures.

[Antibody](#) | [ELISA Kits](#) | [Protein](#) | [Reagents](#)