

CNTFR Rabbit pAb

CatalogNo: YN0597

| Key Features

Host Species

- Rabbit

Reactivity

- Human, Mouse, Rat

Applications

- WB, ELISA

MW

- 40kD (Observed)

Isotype

- IgG

| Recommended Dilution Ratios

WB 1:500-2000

ELISA 1:5000-20000

| Storage

Storage*

-15°C to -25°C/1 year (Do not lower than -25°C)

Formulation

Liquid in PBS containing 50% glycerol, and 0.02% sodium azide.

| Basic Information

Clonality

Polyclonal

| Immunogen Information

Immunogen

Synthesized peptide derived from part region of human protein

Specificity

CNTFR Polyclonal Antibody detects endogenous levels of protein.

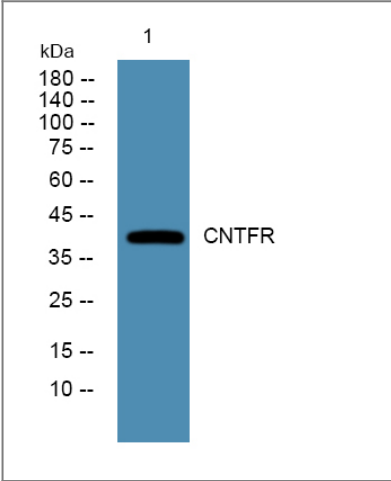
| Target Information

Gene name

CNTFR

| | | | |
|------------------------------|-------------------------------------------------------------------------------------------------------------------------------------------------------------------------------------------------------------------------------------------------------------------------------------------------------------------------------------------------------------------------------------------------------------------------------------------------------------------------------------------------------------------------------------------------------------|-----------------------|-------------------------|
| Protein Name | Ciliary neurotrophic factor receptor subunit alpha (CNTF receptor subunit alpha) (CNTFR-alpha) | | |
| | Organism | Gene ID | UniProt ID |
| | Human | 1271; | P26992; |
| | Mouse | | O88507; |
| | Rat | | Q08406; |
| Cellular Localization | Cell membrane; Lipid-anchor, GPI-anchor. | | |
| Tissue specificity | Nervous system and skeletal muscle. | | |
| Function | Domain:The WSXWS motif appears to be necessary for proper protein folding and thereby efficient intracellular transport and cell-surface receptor binding.,Function:Binds to CNTF. The alpha chain provides the receptor specificity.,similarity:Belongs to the type I cytokine receptor family. Type 3 subfamily.,similarity:Contains 1 Ig-like C2-type (immunoglobulin-like) domain.,similarity:Contains 2 fibronectin type-III domains.,subunit:Heterotrimer of the alpha chain, LIFR and IL6ST.,tissue specificity:Nervous system and skeletal muscle., | | |

Validation Data



Western blot analysis of lysates from HCT116 cells, primary antibody was diluted at 1:1000, 4°over night

Contact information

Orders: order.cn@immunoway.com
Support: support.cn@immunoway.com
Telephone: 400-8787-807(China)
Website: http://www.immunoway.com.cn
Address: 2200 Ringwood Ave San Jose, CA 95131 USA



Please scan the QR code to access additional product information:
CNTFR Rabbit pAb

