

CBPO Rabbit pAb

CatalogNo: YN0557

Key Features

Host Species

- Rabbit

Reactivity

- Human

Applications

- WB, ELISA

MW

- 41kD (Observed)

Isotype

- IgG

Recommended Dilution Ratios

WB 1:500-2000

ELISA 1:5000-20000

Storage

Storage* -15°C to -25°C/1 year (Do not lower than -25°C)

Formulation Liquid in PBS containing 50% glycerol, 0.5% BSA and 0.02% sodium azide.

Basic Information

Clonality Polyclonal

Immunogen Information

Immunogen Synthesized peptide derived from part region of human protein

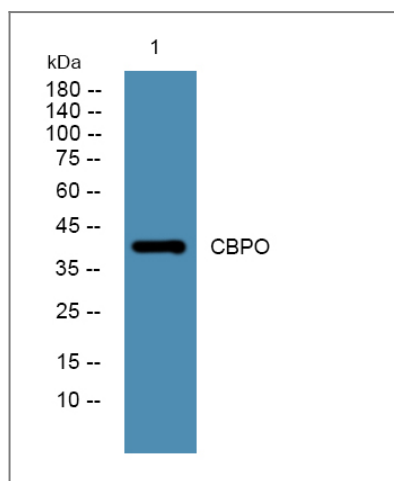
Specificity CBPO Polyclonal Antibody detects endogenous levels of protein.

Target Information

Gene name CPO

Protein Name	Carboxypeptidase O (CPO) (EC 3.4.17.-)		
	Organism	Gene ID	UniProt ID
	Human	130749 ;	Q8IVL8 ;
Cellular Localization	Apical cell membrane ; Lipid-anchor, GPI-anchor .		
Tissue specificity	Detected in enterocytes of the ileum.		
Function	cofactor: Binds 1 zinc ion per subunit., Function: Probable carboxypeptidase which may cleave proteins with C-terminal acidic residues., similarity: Belongs to the peptidase M14 family.,		

Validation Data



Western blot analysis of lysates from K562 cells, primary antibody was diluted at 1:1000, 4° over night

Contact information

Orders: order.cn@immunoway.com
 Support: support.cn@immunoway.com
 Telephone: 400-8787-807(China)
 Website: <http://www.immunoway.com.cn>
 Address: 2200 Ringwood Ave San Jose, CA 95131 USA



Please scan the QR code to access additional product information:
CBPO Rabbit pAb