

CBPA4 Rabbit pAb

CatalogNo: YN0553

Key Features

Host Species

- Rabbit

Reactivity

- Human, Mouse

Applications

- WB, ELISA

MW

- 46kD (Observed)

Isotype

- IgG

Recommended Dilution Ratios

WB 1:500-2000

ELISA 1:5000-20000

Storage

Storage*

-15°C to -25°C/1 year (Do not lower than -25°C)

Formulation

Liquid in PBS containing 50% glycerol, 0.5% BSA and 0.02% sodium azide.

Basic Information

Clonality

Polyclonal

Immunogen Information

Immunogen

Synthesized peptide derived from part region of human protein

Specificity

CBPA4 Polyclonal Antibody detects endogenous levels of protein.

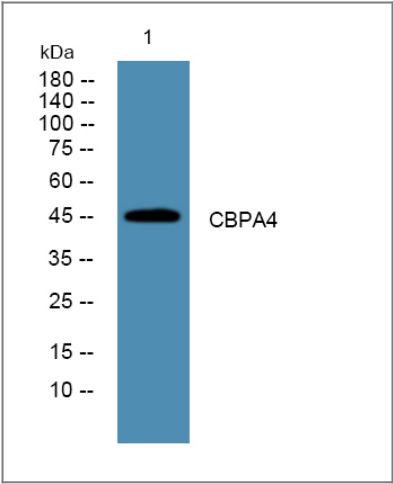
Target Information

Gene name

CPA4 CPA3 UNQ694/PRO1339

Protein Name	Carboxypeptidase A4 (Carboxypeptidase A3)		
	Organism	Gene ID	UniProt ID
	Human	51200;	Q9UI42;
	Mouse		Q6P8K8;
Cellular Localization	Secreted .		
Tissue specificity	Fetal expression in the adrenal gland, brain, heart, intestine, kidney, liver and lung. Except for fetal brain that shows no imprinting, expression was found preferentially from the maternal allele.		
Function	cofactor: Binds 1 zinc ion per subunit., Function: Metalloprotease that could be involved in the histone hyperacetylation pathway., induction: Up-regulated by inhibitors of histone dactylation., similarity: Belongs to the peptidase M14 family., subunit: Interacts with LXN., tissue specificity: Fetal expression in the adrenal gland, brain, heart, intestine, kidney, liver and lung. Except for fetal brain that shows no imprinting, expression was found preferentially from the maternal allele.,		

Validation Data



Western blot analysis of lysates from SH-SY5Y cells, primary antibody was diluted at 1:1000, 4° over night

Contact information

Orders: order.cn@immunoway.com
 Support: support.cn@immunoway.com
 Telephone: 400-8787-807(China)
 Website: <http://www.immunoway.com.cn>
 Address: 2200 Ringwood Ave San Jose, CA 95131 USA



Please scan the QR code to access additional product information:
CBPA4 Rabbit pAb

