

CAH10 Rabbit pAb

CatalogNo: YN0551

| Key Features

Host Species

- Rabbit

Reactivity

- Human, Mouse

Applications

- WB, ELISA

MW

- 36kD (Observed)

Isotype

- IgG

| Recommended Dilution Ratios

WB 1:500-2000

ELISA 1:5000-20000

| Storage

Storage*

-15°C to -25°C/1 year (Do not lower than -25°C)

Formulation

Liquid in PBS containing 50% glycerol, 0.5% BSA and 0.02% sodium azide.

| Basic Information

Clonality

Polyclonal

| Immunogen Information

Immunogen

Synthesized peptide derived from part region of human protein

Specificity

CAH10 Polyclonal Antibody detects endogenous levels of protein.

| Target Information

Gene name

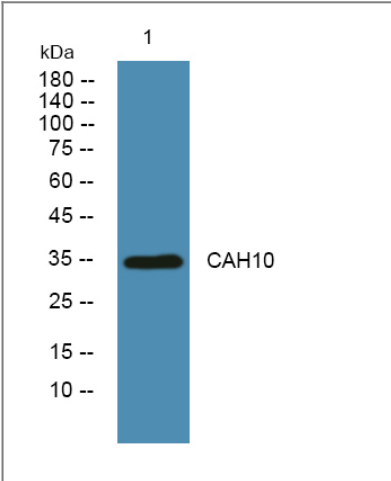
CA10 hucep-15 UNQ533/PRO1076

| | | | |
|---------------------|---|------------------------|-------------------------|
| Protein Name | Carbonic anhydrase-related protein 10 (Carbonic anhydrase-related protein X) (CA-RP X) (CARP X) (Cerebral protein 15) | | |
| | Organism | Gene ID | UniProt ID |
| | Human | 56934; | Q9NS85; |
| | Mouse | | P61215; |

Tissue specificity Strong expression in brain and central nervous system.

Function developmental stage:Not expressed in fetal brain.,Function:Does not have a catalytic activity.,similarity:Belongs to the alpha-carbonic anhydrase family.,tissue specificity:Strong expression in brain and central nervous system.,

Validation Data



Western blot analysis of lysates from K562 cells, primary antibody was diluted at 1:1000, 4°over night

Contact information

Orders: order.cn@immunoway.com
 Support: support.cn@immunoway.com
 Telephone: 400-8787-807(China)
 Website: http://www.immunoway.com.cn
 Address: 2200 Ringwood Ave San Jose, CA 95131 USA



Please scan the QR code to access additional product information:
CAH10 Rabbit pAb