

CALL6 Rabbit pAb

CatalogNo: YN0535

| Key Features

Host Species

- Rabbit

Reactivity

- Human

Applications

- WB,ELISA

MW

- 19kD (Observed)

Isotype

- IgG

| Recommended Dilution Ratios

WB 1:500-2000

ELISA 1:5000-20000

| Storage

Storage*

-15°C to -25°C/1 year(Do not lower than -25°C)

Formulation

Liquid in PBS containing 50% glycerol, 0.5% BSA and 0.02% sodium azide.

| Basic Information

Clonality

Polyclonal

| Immunogen Information

Immunogen

Synthesized peptide derived from part region of human protein

Specificity

CALL6 Polyclonal Antibody detects endogenous levels of protein.

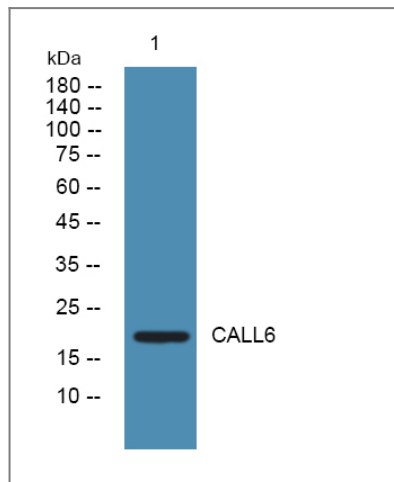
| Target Information

Gene name

CALML6 CAGLP CALGP

Protein Name	Calmodulin-like protein 6 (Calglandulin-like protein)		
	Organism	Gene ID	UniProt ID
	Human	163688;	Q8TD86;
Cellular Localization	Cytoplasm . Nucleus .		
Tissue specificity	Expressed in prostate, thymus, heart, skeleton muscle, bone marrow and ovary.		
Function	similarity:Belongs to the calmodulin family. Calglandulin subfamily.,similarity:Contains 4 EF-hand domains.,tissue specificity:Expressed in prostate, thymus, heart, skeleton muscle, bone marrow and ovary.,		

Validation Data



Western blot analysis of lysates from A431 cells, primary antibody was diluted at 1:1000, 4°over night

Contact information

Orders: order.cn@immunoway.com
 Support: support.cn@immunoway.com
 Telephone: 400-8787-807(China)
 Website: <http://www.immunoway.com.cn>
 Address: 2200 Ringwood Ave San Jose, CA 95131 USA



Please scan the QR code to access additional product information:
CALL6 Rabbit pAb