

CAB39 Rabbit pAb

CatalogNo: YN0525

Key Features

Host Species

- Rabbit

Reactivity

- Human, Mouse

Applications

- WB, ELISA

MW

- 37kD (Observed)

Isotype

- IgG

Recommended Dilution Ratios

WB 1:500-2000

ELISA 1:5000-20000

Storage

Storage*

-15°C to -25°C/1 year (Do not lower than -25°C)

Formulation

Liquid in PBS containing 50% glycerol, 0.5% BSA and 0.02% sodium azide.

Basic Information

Clonality

Polyclonal

Immunogen Information

Immunogen

Synthesized peptide derived from part region of human protein

Specificity

CAB39 Polyclonal Antibody detects endogenous levels of protein.

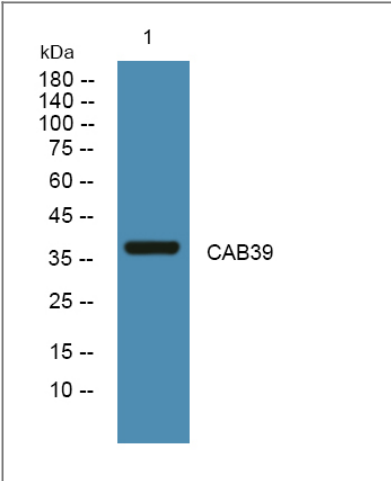
Target Information

Gene name

CAB39 MO25 CGI-66

Protein Name	Calcium-binding protein 39 (MO25alpha) (Protein Mo25)		
	Organism	Gene ID	UniProt ID
	Human	51719;	Q9Y376;
	Mouse		Q06138;
Cellular Localization	Cytoplasm .		
Tissue specificity	Duodenum,Hypothalamus,Testis,		
Function	Function:Together with the STE20-related adaptor-alpha (STRAD alpha) pseudo kinase, forms a regulatory complex capable of stimulating the activity of STK11.,similarity:Belongs to the Mo25 family.,		

| Validation Data



Western blot analysis of lysates from KB cells, primary antibody was diluted at 1:1000, 4°over night

| Contact information

Orders: order.cn@immunoway.com
 Support: support.cn@immunoway.com
 Telephone: 400-8787-807(China)
 Website: http://www.immunoway.com.cn
 Address: 2200 Ringwood Ave San Jose, CA 95131 USA



Please scan the QR code
 to access additional
 product information:
CAB39 Rabbit pAb